

Peckham and Nunhead Community Council

Wednesday 21 November 2012

7.00 pm

St Mary Magdalene Church , 17 Saint Mary's Road, (Off Queens Road)
London, SE15 2EA

Membership

Councillor Cleo Soanes (Chair)
Councillor Mark Glover (Vice-Chair)
Councillor Chris Brown
Councillor Sunil Chopra
Councillor Fiona Colley
Councillor Rowenna Davis
Councillor Nick Dolezal
Councillor Gavin Edwards
Councillor Renata Hamvas
Councillor Barrie Hargrove
Councillor Richard Livingstone
Councillor Catherine McDonald
Councillor Victoria Mills
Councillor Michael Situ
Councillor Althea Smith

Members of the committee are summoned to attend this meeting

Eleanor Kelly

Chief Executive

Date: Tuesday 13 November 2012



Order of Business

Item
No.

Title

1. INTRODUCTION AND WELCOME

Item No.	Title	Time
2.	APOLOGIES	
3.	DISCLOSURE OF MEMBERS' INTERESTS AND DISPENSATIONS	
	Members to declare any interests and dispensation in respect of any item of business to be considered at this meeting.	
4.	ITEMS OF BUSINESS THAT THE CHAIR DEEMS URGENT	
	The chair to advise whether they have agreed to any item of urgent business being admitted to the agenda.	
5.	MINUTES FROM THE PREVIOUS MEETING (Pages 1 - 9)	
	To approve the minutes of the meeting held on 24 September 2012.	
6.	DEPUTATIONS/PETITIONS (Pages 10 - 11)	7.10 pm
	<ul style="list-style-type: none"> • Petition from Rye Oak Primary School and Children's Centre 	
7.	COMMUNITY ANNOUNCEMENTS AND PRESENTATIONS	7.20 pm
	<ul style="list-style-type: none"> • Launch of the Youth Community Council – short presentation from representatives of the Youth community council. • Launch of the Community Council Fund 2013 - announcement. • To note plans for traffic and highway projects in the Peckham and Nunhead community council area (see report under item 16.) . • Young Person's Project "Biscey" – to given an overview of what the project does. • New Complaints Policy consultation – announcement • Police new Borough Commander – brief address 	
	MAIN BUSINESS	
8.	SOUTHWARK CIVIC ASSOCIATION PRESENTATION	7.40 pm
9.	ENVIRONMENT AND RECYCLING THEME	7.50 pm

Item No.	Title	Time
	<ul style="list-style-type: none"> • Overview from the Cabinet member for Transport, Environment and Recycling and officers from the recycling team • The Friends of Burgess Park – information stall • Veolia Environmental Services: How much do you know about recycling? • Update on this year's Winter contingency plans • Update on Burgess Park – a short film 	
10.	BURGESS PARK - UPDATE	8.35 pm
	<ul style="list-style-type: none"> • Officer presentation on Burgess Park 	
	BREAK AT 8.40 PM	
	An opportunity for residents to talk to councillors and officers.	
11.	PUBLIC QUESTION TIME (Pages 12 - 16)	8.50 pm
	A public question form is included on page 12.	
	This is an opportunity for public questions to be addressed to the chair.	
	Residents or persons working in the borough may ask questions on any matter in relation to which the council has powers or duties.	
	Responses may be supplied in writing following the meeting. Responses to public questions received at previous meetings are included on pages 13 to 15.	
12.	COMMUNITY COUNCIL QUESTIONS TO COUNCIL ASSEMBLY	8.55 pm
	Each community council may submit one question to a council assembly meeting that has previously been considered and noted by the community council.	
	Any question to be submitted from a community council to council assembly should first be the subject of discussion at a community council meeting. The subject matter and question should be clearly noted in the community council's minutes and thereafter the agreed question can be referred to the constitutional team.	
	The community council is invited to consider if it wishes to submit a question to the ordinary meeting of council assembly in January 2013.	
13.	CLEANER GREENER SAFER (CGS) REVENUE FUND (Pages 17 - 21)	9.00 pm

Item No.	Title	Time
	<p>Note: This item is an executive function</p> <p>Members to consider the recommendations contained in the report.</p>	
14.	<p>TRAFFIC SCHEME - BROCKLEY WAY ZEBRA CROSSING (Pages 22 - 46)</p> <p>Members to consider the recommendations contained in the report.</p>	9.10 pm
15.	<p>TRAFFIC SCHEME - EAST DULWICH ZEBRA CROSSING (Pages 47 - 76)</p> <p>Members to consider the recommendations contained in the report.</p>	9.20 pm
16.	<p>CYCLE PERMEABILITY SCHEME (Pages 77 - 84)</p> <p>Members to note the cycle permeability proposals, impact of proposal on parking and representations received during public consultation, as summarised in the report.</p>	9.30 pm

Date: Tuesday 13 November 2012



Peckham and Nunhead Community Council

MINUTES of the OPEN section of the Peckham and Nunhead Community Council held on Monday 24 September 2012 at 7.00 pm at Harris Academy Peckham, 112 Peckham Road, London SE15 5DZ

PRESENT: Councillor Cleo Soanes (Chair)
 Councillor Sunil Chopra
 Councillor Fiona Colley
 Councillor Rowenna Davis
 Councillor Nick Dolezal
 Councillor Gavin Edwards
 Councillor Renata Hamvas
 Councillor Barrie Hargrove
 Councillor Richard Livingstone

OFFICER SUPPORT: Tim Walker (Senior Engineer) Environment Department
 Alison Squires (Senior Planning Policy Officer)
 Akinola Daisi (Revenue and Benefits Officer)
 Michelle Normanly (Project Manager) Environment Department
 Marian Farrugia (Community Council Development Officer)
 Beverley Olamijulo (Constitutional Officer)

1. INTRODUCTION AND WELCOME

The chair welcomed councillors, members of the public and officers to the meeting.

2. APOLOGIES

There were apologies for absence from Councillors Chris Brown, Mark Glover, Catherine McDonald and Althea Smith. Apologies for lateness were received from Councillors Gavin Edwards and Barrie Hargrove.

3. DISCLOSURE OF MEMBERS' INTERESTS AND DISPENSATIONS

None were disclosed.

4. ITEMS OF BUSINESS THAT THE CHAIR DEEMS URGENT

The chair informed the community council that the following item would be accepted as late urgent business at the meeting:

- Item 6 – Deputation report, Starlight Music Academy.

5. MINUTES FROM THE PREVIOUS MEETING

RESOLVED:

That the minutes of the meeting held on 20 June 2012 be agreed as a correct record of that meeting and signed by the chair.

6. DEPUTATION REQUEST

RESOLVED:

That the deputation request from Starlight Music Academy be heard.

The deputation spokesperson, Shanice Duffus, a representative of the Starlight Music Academy addressed the meeting. She mentioned the board of trustees and had worked in partnership with other agencies and the Council. She also spoke about the work they do with young people in the borough. During her address Shanice referred to the Starlight Music Academy being made homeless due to the closure of Peckham Settlement after the centre went into administration. This affected the operation of the Starlight Music Academy and other community groups that used the centre. They asked the community council to assist them in finding alternative accommodation.

In response to questions, the Chair, Councillor Cleo Soanes outlined that the Council were not aware of the situation and were not involved in the decision to close the centre as they were independent from the Council.

The group were advised to contact the Peckham Volunteer Sector Forum for help and advice. Officers held discussions with groups that were affected by the closure (e.g. Southwark Travellers Action Group (STAG) and Hourbank) who asked for assistance to help find suitable alternative premises.

The chair thanked the deputation for their presentation and commended Starlight Music Academy for the work they do with young people. The chair suggested the group contact the council about finding alternative premises which the group agreed to do.

7. COMMUNITY ANNOUNCEMENTS AND PRESENTATIONS

The following announcements were made:

Feedback on workshops: Priority items for future meetings

Marian Farrugia, Community Council Development Officer provided feedback on the workshops which were held at the previous community council meeting. The workshops discussed themes and topics for future meetings and people were asked how they could make their community council meetings better?

The chair, thanked those who participated in the workshops at the previous meeting and stated the following priorities were highlighted in the order set out below:

- **Older people: Activities, service, support and community engagement**
- **Children and young people**
- **Environmental issues including recycling**
- Housing
- Transport – including buses
- Health and wellbeing
- Crime

It was noted that the themes identified in bold would be discussed at future community council meetings.

South London Apprenticeship Fair

The event took place on 25 October 2012 at Liberty House, 9 – 11 Cottage Green, London SE5 7ST. This was an apprenticeship and recruitment fair for young people run by young people.

More details at <http://www.southlondonapprenticeshipfair.co.uk> .

Community Restoration Fund - a scheme supporting young people

The Council's cabinet agreed to set up a funding scheme of £100,000 across the borough. Peckham and Nunhead community council were allocated £21,000. The aim would be to fund local projects, invest in increased opportunity for young people.

For more information contact Hannah Edwards, Specialist Youth Work Team Manager on 020 7525 1710 or email hannah.edwards@southwark.gov.uk .

Local Playwright, Bola Agbaje

Local author, Bola Agbaje who grew up in Peckham was present at the meeting to talk about the play she wrote called "Gone too far". The play which premiered at the Royal Court Theatre in February 2007 received positive reviews. Bola explained that the play would be made as a film that focussed on her experiences whilst growing up in the borough. The concept of the film was to celebrate Peckham and would not be based on negativity.

Destiny (film director) and Rob (producer of the film) were also present mentioned that "Gone too far" was being funded by the British Film Institute (BFI).

Most of the scenes would be filmed in Peckham and other scenes filmed elsewhere. It was announced the filming would start in November 2012. The BFI asked for 'Film extras'

from the local area to take part in the production.

Community Council Fund under spend 2012 – 2013

The chair announced that the sum of £1000 which was under spend from the community council fund 2012 – 2013 had been allocated to the following projects:

- £500 to the Arts Forum and
- £500 to Odd Man Out Productions

Monitoring Forms

Marian explained that the community engagement team were in the process of updating their monitoring forms to improve participation and attendance at community council meetings.

The monitoring forms survey consisted of a number of information sheets which residents were encouraged to complete.

Community safety and enforcement officer

Tanya Barrow, the Community Safety and Enforcement Officer introduced herself to the meeting and outlined that she would be the dedicated community safety officer for Peckham and Nunhead area and as such would be attending the community council meetings in future.

Tanya reported that the team looked at the figures for crime and disorder over the Olympic period which had not gone up during the Olympics and Paralympics. Tanya explained that there was increase in reported crime but a dramatic decrease in criminal damage. Tanya made herself available during the break where she agreed to take questions.

Peckham Town Centre

Eileen Conn thanked for the community council for their help with the recent exhibition on the Peckham Town Centre (also forms part of the Peckham Area Action Plan (PAAP)).

Coach Stirling

Basketball Coach Stirling who works with young people in this area particularly on a Saturday at Harris Academy Peckham was selected to be a torch bearer for the Olympic Games. He showed the torch to people at the meeting where he received a round of applause. Coach Stirling said he was privileged to have carried the torch as it was great day which he enjoyed and shared the occasion with his family. He mentioned that he would be taking the torch around to local schools in the area.

8. LOCAL COUNCIL TAX SUPPORT SCHEME (FORMERLY COUNCIL TAX BENEFIT)

Akinola Daisi from the Revenue and Benefits team was present at the meeting to highlight changes to the council tax system in light of changes to the welfare system.

Akinola said although the national benefit was introduced to help low income families central government wanted to abolish the council tax benefit. They have asked local councils to come up with a new scheme. The changes would mean a cap for those in receipt of council tax benefit. During the months of July 2012 until September 2012 council officers had been around the borough and attended housing forums and TRAs (Tenants & Residents Associations) to inform them of the changes.

What are the changes?

Those in receipt of council tax benefit could lose £15 of every £100 of council tax benefit received. In short, everyone of workable age would be affected.

The council's cabinet would be considering a report in November 2012 and the same report would be considered by council assembly by the end of the year.

Akinola responded to questions and heard the views of residents which were noted as the following:

One resident stated that taking £15 of every £100 seemed to be a huge amount to take for those families that are on low income. The resident felt that the council should look at other alternatives or retrieve the savings from elsewhere.

Akinola said although the council needed to maximise discounts and exemptions, of the council tax benefit scheme, these issues would be explored further. It was noted that people with disabilities might be exempted from these changes. People would be signposted to other agencies so they could provide assistance.

Councillor Richard Livingstone, cabinet member for resources and community safety explained that central government decided a large share of cuts had to be from those that were in receipt of benefits with further cuts being proposed for the next coming years. He said since the Government introduced these cuts the council are expected to be at a loss of £9 million.

Akinola mentioned that the council were devising an additional welfare scheme which went out to consultation a few months ago. Various agencies had been notified and feedback provided by the housing forums.

In response to questions, the officer explained that no particular group could be identified as being worst affected under the new scheme, it could be a mixture of groups.

The chair thanked Akinola for his presentation.

9. LAUNCH OF THE CLEANER, GREENER SAFER (CGS) FUNDING PROGRAMME

Michelle Normanly from the Cleaner Greener Safer team explained that this year's programme had been launched. The meeting was shown power point slides of the cleaner greener safer projects that were completed in the Peckham and Nunhead area over the last two years.

Representatives from Pelican and Bonamy Estates talked about their completed schemes and thanked the community council for the funding which they received.

Bonamy Estate: This was for an extension cabin on the estate on the Bonamy Estate where classes are held for primary school children and adults. The Pelican Estate has used its CGS funding for fencing around a children's allotment on the estate.

The deadline for applications was 30 November 2012. Contact: cgs@southwark.gov.uk or telephone 020 7525 1259.

10. THE PECKHAM AND NUNHEAD AREA ACTION PLAN AND COMMUNITY INFRASTRUCTURE LEVY (CIL)

Alison Squires from the planning policy team presented the Peckham Area Action Plan. She thanked those who had taken part in the consultation and submitted comments on the action plan. During the consultation officers met with fifty six community groups and attended various events setting out the Plan's policies and what the Peckham Town Centre should look like.

The Area Action Plan would now be in the formal stage of consultation and only factual changes would be made.

Southwark's Community Infrastructure Levy

Following on from the previous meeting when this item was introduced during community announcements it referred to the replacement of the old system currently known as 'S106 planning obligations'.

The community infrastructure levy was about charging new developments in the borough so the money could be used for infrastructure.

At this stage meeting went into workshops an officer was assigned to each group.

11. FEEDBACK FROM WORKSHOPS ON THE PECKHAM AND NUNHEAD AREA ACTION PLAN

Alison Squires thanked those that took part in the workshops.

The consultation period for Peckham Area Action Plan would be until 5 December 2012 (5.00 pm). For further information contact Alison Squires email alison.squires@southwark.gov.uk or futurepeckham@southwark.gov.uk Telephone number 020 7525 1259.

12. PECKHAM ROAD SOUTH PARKING CONSULTATION

Tim Walker, Senior Engineer, presented the consultation report contained in the agenda pack. Tim explained the council wanted to seek the views of members and residents on

the proposed consultation methods and boundary for Peckham & Nunhead and Camberwell in relation to parking. Tim said any changes needed would be implemented through this process.

The two stage consultation would be information like occupancy surveys, on what people think most affects the area, for example would it be commuter parking?

Officers would come back to a future community council meeting with the council's findings before a final decision is taken on the layout of the scheme.

RESOLVED:

That the community council noted the information in the report and supported the recommendations for a proposed parking consultation along with the methods to be used in that consultation.

13. PUBLIC QUESTION TIME

Update on public questions from previous the meetings

The chair referred to a public question that was first raised in April 2012 which required a response from the GLA office. It referred to the funding of the Olympic Games. The chair explained it was difficult to formally respond at the time due to the GLA elections. A response to this question was circulated at the meeting and is attached to the agenda pack.

The meeting were asked to note that TfL sent a response on the issue of the guard railings along Peckham Hill Street and junction of Peckham High Street set out in the agenda.

Public questions

Question 1:

Could the Peckham Town Centre Manager be invited to attend a community council meeting to address the concern expressed by some residents about many of the shops located in the area and explain why they are not from a wider community?

Would the Peckham Town Manager confirm what shops should be there and not what he thinks should be there?

Response: The community council would look into this and ask the Town Centre Manager to attend a future meeting.

Question 2:

Investment in street lighting in the North Nunhead area and around Nunhead Station was done successfully. However Evelina Road had the worst lighting in that area, would this road be considered under devolved budget for highways and lighting?

Response: Follow up response to be given at a future community council meeting.

Question 3:

Peckhamplex Cinema although was not a thriving business, the owners decided to keep the place going as part of local culture in the area. Could we ask the council to support us in whatever they can?

Response:

Councillor Livingstone explained that there were no immediate plans for the building at the moment but discussions concerning its development are still ongoing with the property team.

Councillor Livingstone agreed to follow this with officers on the long term investment of the building and a response given at a future community council meeting.

14. LOCAL PARKING AMENDMENTS

Members considered the information in the report.

Note: This is an executive decision.

RESOLVED:

That the following local parking amendments, detailed in the appendices of the report be approved for implementation subject to the outcome of any necessary statutory procedures:

- Heaton Road and Elcot Avenue installation of one disabled persons (blue badge) parking bay at each location
- Astbury Road installation of at any waiting restrictions (7.5 metres approximately outside entrance to No. 35 Astbury Road.

15. CLEANER GREENER SAFER (CGS) FUNDING REALLOCATION

Members considered the information in the report.

Note: This is an executive decision.

RESOLVED:

1. That £3,300 of the unallocated £17,410 of Cleaner Greener Safer capital fund be reallocated to the following project: 14 – 19 Mortlock Close, Cossall Estate, SE15 railings to eradicate anti social behaviour.
2. That £10,000 of the unallocated CGS funding be added to an existing award of £29,000 for Trent Frome and Welland car park resurfacing, 2012 – 2013 CGS

project.

3. That the reallocation of the remaining £4,110 be considered at a future meeting.

16. STRATEGIC TRANSPORT S106 RELEASE REPORT

Members considered the information in the report.

RESOLVED:

That Members noted the information in the report and supported the release of section 106 funding for the following projects:

- Elephant and Castle - £857,203
- Camberwell Town Centre - £155,603
- Lower Road - £266,533.

The meeting ended at 10.00 pm.

CHAIR:

DATED:

Item No. 6	Classification: Open	Date: 21 November 2012	Meeting Name: Peckham and Nunhead Community Council
Report title:		Petition – Parking and Safety Issues outside Rye Oak Primary School and Children’s Centre	
Ward(s) or groups affected:		The Lane	
From:		Proper Constitutional Officer	

RECOMMENDATION

1. That the Peckham and Nunhead Community Council consider a petition in respect of Parking and Safety issues outside Rye Oak Primary School and Children’s Centre.

BACKGROUND INFORMATION

2. A petition containing 250 signatures or more will be presented to the community council. A petition can be submitted by a person of any age who lives, works or studies in Southwark. Petitions must relate to matters which the council has powers or duties or which affects Southwark.
3. At the meeting, the spokesperson for the petition will be invited to speak up to five minutes on the subject matter. The community council will debate the petition for a period of up to 15 minutes and may decide how to respond to the petition at the meeting.
4. Any relevant resource or community impact issues will be contained in the comments of the strategic director.

KEY ISSUES FOR CONSIDERATION

5. A petition containing over 250 signatures has been received in respect of parking and safety issues outside Rye Oak Primary School and Children’s Centre. The petition states:

“We are trying to make the road outside Rye Oak Primary School and Children’s Centre a safer place for children and parents / carers to cross.”

6. The parents and carers of Rye Oak Primary School and Children's Centre stated that in order to prevent unsafe parking and illegal stopping on the zig-zag lines, one of the following is needed:
 - A police/ community officer patrol at the start and end of the school day
 - A camera to monitor illegal parking
 - A parking attendant

SUPPLEMENTARY ADVICE FROM OTHER OFFICERS**Strategic Director of Environment and Leisure**

7. Comments to follow.

BACKGROUND DOCUMENTS

Background Papers	Held At	Contact
Petition - Parking and Safety Issues outside Rye Oak Primary School and Children's Centre	160 Tooley Street, London SE1 2QH	Beverley Olamijulo, Constitutional Officer, 160 Tooley Street.

AUDIT TRAIL

Lead Officer	Ian Millichap, Constitutional Manager	
Report Author	Beverley Olamijulo, Constitutional Officer	
Version	Final	
Dated	7 November 2012	
Key Decision?	No	
CONSULTATION WITH OTHER OFFICERS / DIRECTORATES / CABINET MEMBER		
Officer Title	Comments Sought	Comments included
Director of Legal Services	No	No
Strategic Director of Finance and Corporate Services	No	No
Strategic Director of Environment and Leisure	Yes	No
Date final report sent to Constitutional/Community Council/Scrutiny Team		7 November 2012



Peckham and Nunhead Community Council

Public Question form

Your name:

Your mailing address:

What is your question?

Please give this form to Beverley Olamijulo, Constitutional Officer, or Marian Farrugia, Community Council Development Officer

Feedback on issues - Peckham and Nunhead Community Council on 24 September 2012

Question	Responses
<p>Question 3: Public question raised at the last community council on 20 June 2012. The resident stated that the former London Assembly Mayor sent out information to residents which indicated that Londoners would pay as part of their council tax payment, 38 pence per week from 2006/7 until 2016/2017.</p> <p>He asked why council tax payers were charged this amount up 2017 (after the Olympics had taken place) and why couldn't TfL cover the cost for infrastructure and road maintenance and were these extra payments necessary?</p> <p>He asked for further clarification on the following:</p> <p>What did the previous London Mayor say about the 38 pence charge to council tax payers?</p> <p>What is the actual time frame for these payments?</p> <p>What exactly would the money be used for?</p>	<p>Response from the GLA - Mandu Reid, London 2012, City Operations, Borough Engagement Lead</p> <p>The information below has been provided by our finance department in response to Roy King's questions:</p> <p>The £20 per year band D council tax contribution is designed to raise the £625 million that the previous Mayor agreed with Government would come from London council tax payers over the period 2006-07 to 2016-17.</p> <p>The Mayor is continuing to raise council tax in line with this agreement. By the end of the 2011-12 financial year a total of approximately £353 million has been raised from London council tax payers towards the cost of the Games.</p> <p>Current estimates of the growth in the council taxbase indicate that the £625 million can be raised by levying £20 per year at band D up to 2015-16 and approximately £8 in 2016-17.</p> <p>This information is included in the Mayor's annual formal budget proposals that are subject to scrutiny by the London Assembly and which can be viewed on the GLA's public website.</p> <p>The £625 million contribution from London taxpayers is part of the £9.3 billion public sector funding package for the Games which includes £6.2 billion from central government i.e. the biggest contribution is from national taxpayers. The specific contribution by Londoners is in recognition of the fact that the benefit of hosting the Games will be felt most keenly by people living in London.</p> <p>Most of the council tax contribution has funded the capital cost of delivering the Games infrastructure including the venues and other upgrades supporting the delivery such as to transport.</p> <p>However £27 million has funded a 'Look and Feel' programme which contributed to making London such an attractive host city. This included city dressing and 'spectaculars' such as the rings and agitos on Tower Bridge and lighting of bridges and the London Outdoors Arts Festival.</p> <p>In addition some £12 million was used to fund other GLA Games programmes such as the highly successful Team London Ambassador volunteer programme and the running of the London Media Centre for the thousands of additional journalists in London during the Olympics and Paralympics.</p> <p>A further £22 million funded additional costs borne by the boroughs who were most affected by the hosting of the Games such as for extra street cleaning and refuse disposal.</p> <p>Sincere apologies for the delay</p>

**Feedback on issues - Peckham and Nunhead Community Council on 24
September 2012**

Question	Responses
<p>Question 1: Lack of investment in African Caribbean businesses, resulting in the Asian community controlling the food of another (oppressed). What are the Council doing to enrich the African Caribbean community into providing food for their community, the current situation is unacceptable?</p> <p>Question 2: Health and Safety issues of concern regarding the current breaches of food quality and food handling standards: How often are Traders in Rye Lane required to update their food safety, food handling certificates?</p> <p>Question 3: How often does Trading Standards investigate the shops mentioned in Rye Lane, as the African, Caribbean community had complained with no results provided for the public?</p>	<p>Q1. Lack of investment in African-Caribbean businesses etc. The food safety team has no remit in this area. However, the team provide support and guidance to anyone wishing to start a food business in the borough so that there can be good standards of hygiene and food law compliance which benefits the viability of the business. Certificates with hygiene ratings from 0 to 5 (5 being the best) are issued to businesses to display on their premises. This encourages customers to support businesses with good hygiene standards and act as a driver for the poorer performing businesses to raise standards overall which improves economic prospects.</p> <p>Q2. There are 83 food businesses trading in Rye Lane which are currently on the food team records. Only two businesses have not yet had a food hygiene inspection or similar intervention. These will be planned shortly. All other businesses have been inspected and where necessary appropriate enforcement actions and follow up undertaken.</p> <p>The unregulated businesses are being targeted for inspection and regulation; however, opening times and access issues have hindered progress. Food businesses are inspected and regulated in accordance with national legislation and associated guidance. Food Law Code of Practice requires inspections or other interventions at food businesses to be based on established risk rating principles which define the frequency of inspections. In general, a number of different food safety and food standards work is carried out on a regular basis in Peckham and particularly Rye Lane as part of joint multi-disciplinary initiatives or specifically targeting known food law contraventions.</p> <p>There is no legal requirement for food business operators or food handlers to hold certificates of qualifications or training in food safety/hygiene. Instead, the law requires that they have sufficient knowledge of food safety equivalent to the work they are required to do. This can be achieved by supervision instructions and or training.</p> <p>Food enforcement officers routinely assess staff knowledge and awareness of food law requirements and where deficiencies are identified, they are required to undergo training or supervision.</p> <p>Q3. All complaints made to the food team about food or food premises are investigated by food safety enforcement officers and appropriate action taken to resolve the issue.</p> <p>In the last two years to 31 October 2012, the team received a total of 68 enquiries linked to food businesses in Rye Lane. 52 of these are complaints about food bought from businesses in Rye Lane or hygiene of the food premises itself. All have been investigated and resolved or complaint unsubstantiated.</p>

	<p>Over the two year period specifically for food businesses in Rye Lane, the team has issued 86 written warnings, served 12 Hygiene Improvement Notices, Closed two food businesses using Hygiene Emergency Prohibition procedures and successfully prosecuted one food business operator for food law contraventions. The prosecution resulted in fines and costs in the sum of £5,600.</p>
--	---

Feedback on issues - Peckham and Nunhead Community Council on 24 September 2012

Question	Responses
<p>Question 2:</p> <p>Investment in street lighting in the North Nunhead area and around Nunhead Station was done successfully. However Evelina Road had the worst lighting in that area, would this road be considered under devolved budget for highways and lighting?</p>	<p>Response from the Public Realm programme manager</p> <p>Replacement street lighting in Evelina Road is programmed for implementation in early 2013 as part of the Outer London Fund/area renewal programme. It is worth noting that there is no devolved street lighting capital budget in 2012/13.</p>

Item No. 13.	Classification Open	Date: 21 November 2012	Meeting Name: Peckham and Nunhead Community Council
Report title:		Cleaner Greener Safer Revenue Fund 2012 /13	
Ward(s) or groups affected:		Livesey, Nunhead, Peckham, Peckham Rye and The Lane wards.	
From:		Head of Community Engagement	

RECOMMENDATION

1. That the Peckham and Nunhead Community Council allocate the remaining £13,000 of the Cleaner, Greener, Safer (CGS) revenue fund 2012/13. The projects to be considered for allocation are set out in Appendix 1.

BACKGROUND INFORMATION

2. A Cleaner, Greener, Safer revenue fund 2012/13 consisting of £210,000 across the borough, with an allocation of £10,000 per ward, has been introduced as part of the budget strategy agreed at the council assembly meeting on the 29 February 2012.
3. The aim of this fund is to give community councils decision making powers over significant amounts of revenue funding that they can allocate to meet locally determined priorities. It is anticipated that the availability of the Revenue Fund will enhance and complement the effectiveness of the Capital Fund.
4. On 1 March 2012 the Leader of the Council delegated the executive function to each community council to take the Cleaner, Greener, Safer Revenue Funding decisions in their areas.

KEY ISSUES FOR CONSIDERATION

5. The community councils will use the criteria set out below for the allocation of this funding.
 - a. Proposals that make an improvement to an area on the basis of making it cleaner, greener or safer or a combination.
 - b. CGS applications from the capital round which were ruled out because they were revenue applications.
 - c. The revenue fund could be used to meet the revenue costs associated with a CGS capital award.
 - d. A Community Council may choose to allocate some or all of their revenue resources to their CGS capital allocations.

- e. Subject to the availability of resources, the revenue fund may be used to buy services from the council.
6. While the allocation is based on £10,000 per ward, a community council can, if it chooses, decide to aggregate all or part of the funding and spend more than £10,000 per ward. The £13,000 under spend which is being considered at this meeting, is from the old Nunhead and Peckham Rye Community Council allocation, which originally had £30,000 and has already spent £17,000.
 7. Community councils will be free to indicate whether they would like expenditure to be an ongoing commitment over more than one financial year or spending over a fixed timescale for a one-off project. Commitments will be subject to final agreement of the council budget and a decision by each Community Council on an annual basis.
 8. As with any executive decision taken by community councils this is subject to the council's existing scrutiny arrangements.

Delivery

9. Once the Community Council has made their selections by the method of their choice they will be designed and delivered as soon as possible in 2012/13. Any under spends or projected overspends will be reported back to community council for resolution or reallocation.

Community impact statement

10. The roles and functions of community councils include the promotion of involvement of local people in the democratic process. Community councils take decisions on local matters including environmental improvement and community safety as well as consultation on a wide range of policies and strategies that affect the area.
11. An explicit objective within community councils is that they be used to actively engage as widely as possible with, and bring together, Southwark's diverse local communities on issues of shared or mutual interest. The Cleaner Greener Safer programme is an important tool in achieving community participation.
12. In fulfilling the above objectives that community councils have of bringing together and involving Southwark's diverse local communities, consideration has also been given to the council's duty under The Equality Act 2010 which requires the council to have due regard when taking decisions to the need to:
 - a. Eliminate discrimination, harassment, victimisation or other prohibited conduct;
 - b. Advance of equality of opportunity between persons who share a relevant protected characteristic and those who do not share it
 - c. Foster good relations between those who share a relevant characteristic and those that do not share it.

Of particular regard are issues of age, disability, gender reassignment, pregnancy and maternity, race, religion or belief, sex, sexual orientation.

Having due regard to the need to advance equality of opportunity is further defined in s.149 as having due regard to the need of:

- a. Remove or minimise disadvantages connected with a relevant protected characteristic
- b. Take steps to meet the different needs of persons who share a relevant protected characteristic

Resource implications

13. The total cost of the CGS Revenue Fund is part of the Budget process for 2012/13 agreed by Council Assembly. Any costs incurred in implementing this fund will be met within existing resources.

Policy implications

14. The CGS Revenue Fund is fully aligned with the Council's policies toward sustainability, regeneration and community engagement.

Consultation

15. Decisions will reflect longstanding ward priorities and may be complementary to the decisions made in the CGS Capital fund allocation. In this first year of the scheme consultation will take place at the Community Council meetings and will therefore be an integral part of the decision making process. In future years consultation will be a key part of developing and identifying projects for funding and considering whether to proceed with indicative expenditure.

Legal Implications

16. The Local Government Act 2000 [as amended] ('the Act') gives the leader the power to delegate any executive function to whoever lawfully can undertake the function. The allocation of the Cleaner, Greener, Safer revenue fund ('CGS') is an executive function.
17. Community councils are 'area committees' within the meaning of the Act and executive functions can be delegated to them by the leader.
18. In allocating funding under the CGS community councils must have regard to the council's equality duties set out in section 149 of the Equality Act 2010. The report author has demonstrated how those duties have been considered in the body of the report at paragraph 12 in the Community Impact Statement.

BACKGROUND DOCUMENTS

Background Papers	Held At	Contact
Cleaner Greener Safer Revenue	160 Tooley Street London SE1 2QH	Marian Farrugia 0207 525 1780
Old Nunhead & Peckham Community Council 26 April 2012	160 Tooley Street London SE1 2QH http://modern.gov.southwark.gov.uk/ieListDocuments.aspx?CId=177&	Beverley Olamijulo 020 7525 7234

	Mid=3959&Ver=4	
The Cleaner Greener, Safer Revenue Fund Decision Making Report sent to the Leader of the Council on 23.02.2012	160 Tooley Street London SE1 2QH	Marian Farrugia 020 7525 1780

APPENDICES

No.	Title
Appendix 1	Peckham and Nunhead Community Council CGS Revenue Fund 2012/13 projects for consideration

AUDIT TRAIL

Lead Officer	Stephen Douglass, Head of Community Engagement	
Report Author	Daryl Telles, Neighbourhoods Manager	
Version	Final	
Dated	7 November 2012	
Key Decision?	No	
CONSULTATION WITH OTHER OFFICERS / DIRECTORATES / CABINET MEMBER		
Officer Title	Comments Sought	Comments included
Director of Legal Services	Yes	Yes
Strategic Director, Finance & Corporate Services	No	No
Cabinet Member	No	No
Date final report sent to Constitutional Team	9 November 2012	

**Peckham and Nunhead Community Council 21 November 2012
Cleaner Greener Safer Revenue Fund 2012 – 2013**

Proposals for consideration

Proposal Name	Ward	Location	Idea	Approximate cost
Supporting Peckham Town Centre Business Growth programme.	The Lane	The Town Centre	To add £13000 to the Supporting Business Growth Community restoration fund programme around the Peckham Town Centre businesses that is being carried out by The Means project.	£13,000
Community Wardens	Nunhead, The Lane and Peckham Rye Wards (outside the town centre area)	At identified areas.	To contribute towards the provision of additional dedicated community warden patrol time for one year focusing on issues and areas identified by the Community Council outside the town centre area.	£13,000
Projects for the elderly	Nunhead, The Lane and Peckham Rye Wards	Identified projects across Nunhead, The Lane and Peckham Rye Wards.	To contribute towards the delivery of projects for the elderly with a view to providing organised activities within a safe and secure environment.	£13,000

Item No. 14.	Classification: Open	Date: 21 November 2012	Meeting Name: Peckham and Nunhead Community Council
Report title:		Traffic Scheme - Brockley Way Zebra Crossing	
Ward(s) or groups affected:		Nunhead and Peckham Rye	
From:		Head of Public Realm	

RECOMMENDATION

1. That the Peckham and Nunhead Community council approve the implementation of the above scheme (subject to statutory consultation) in line with the recommendations in the attached consultation report.

BACKGROUND INFORMATION

2. In accordance with Part 3H paragraph 16 of the Southwark Constitution, community councils are responsible for determining the implementation of non-strategic traffic schemes e.g. road markings which includes the implementation of this zebra crossing.
3. Full details of all results associated with the study can be found in Appendix 1 the 'consultation report'.
4. The scheme is funded by Cleaner Greener Safer programme agreed by the Nunhead & Peckham Rye Community Council on 15 March 2012.

KEY ISSUES FOR CONSIDERATION

5. Informal public consultation took place with all residents and businesses within the consultation area from 2 October 2012 until 26 October 2012.
6. Full details of the consultation strategy, results, conclusions and recommendations can be found in Appendix 1.
7. The proposal was well supported and therefore the recommendation is to proceed to implementation.

Policy implications

8. The recommendations contained within this report are consistent with the policies of the Transport Plan 2011, particularly:

Policy 1.1 – pursue overall traffic reduction

Policy 2.3 – promote and encourage sustainable travel choices in the borough

Policy 4.2 – create places that people can enjoy

Policy 5.1 - Improve safety on our roads and to help make all modes of transport safer.

Community impact statement

9. The implementation of any transport project creates a range of community impacts. All transport schemes aim to improve the safety and security of vulnerable groups and support economic development by improving the overall transport system and access to it.

Resource implications

10. The project is funded by the Peckham and Nunhead Community council CGS fund and all costs associated with the implementation of the project will be contained within the available funding.

Consultation

11. Ward members were consulted prior to commencement of the study.
12. Informal public consultation was carried out in October 2012, as detailed above.
13. If approved for implementation this will be subject to statutory consultation required in the making of any permanent Traffic Management Orders.

BACKGROUND DOCUMENTS

Background Papers	Held At	Contact
Transport Plan 2011	Southwark Council Environment Public Realm Network Development 160 Tooley Street London SE1 2QH Online: http://www.southwark.gov.uk/info/200107/transport_policy/1947/southwark_transport_plan_2011	Matthew Hill 020 7525 3541

APPENDICES

No.	Title
Appendix 1	Brockley Way Zebra Crossing Consultation Report

AUDIT TRAIL

Lead Officer	Des Waters, Head of Public Realm	
Report Author	Matthew Hill, Public Realm Programme Manager	
Version	Final	
Dated	12 November 2012	
Key Decision?	No	
CONSULTATION WITH OTHER OFFICERS / DIRECTORATES / CABINET MEMBER		
Officer Title	Comments Sought	Comments included
Director of Legal Services	No	No
Strategic Director, Finance and Corporate Services	No	No
Cabinet Member	Yes	No
Date final report sent to Constitutional Team		12 November 2012

London Borough of Southwark



Brockley Way Zebra Crossing

Public Consultation Summary

November 2012

London Borough of Southwark

Brockley Way Zebra Crossing Proposal

Public Consultation Summary

Contents

List of Figures	2
List of Tables	3
1.0 Introduction	4
1.1 Background	4
1.2 Project and Objectives	4
1.3 Consultation Procedure	5
2.0 Consultation Responses	5
2.1 Response Rate and Distribution	5
2.2 Questionnaire Analysis	6
2.3 Additional Comments	7
2.4 Levels of Consensus	8
2.5 Statutory Consultee Replies	9
3.0 Recommendations	9
Appendices	10
Appendix A: Scheme Proposals	11
Appendix B: Consultation Documents	12
Appendix C: Location Plan and Extents of Consultation	13
Appendix D: List of Addresses within Distribution Area	14

List of Figures

Figure 1:	Location of proposed scheme	4
Figure 2:	Graphical representation of consultation data for question 2	7

List of Tables

Table 1:	Retuned questionnaire results for question 1	6
Table 2:	Retuned questionnaire results for question 2	7

1.0 Introduction

1.1 Background

- 1.1.1 This document report has been produced by the London Borough of Southwark Public Realm Projects Group, to provide a summary of the consultation exercise for a proposed zebra crossing in Brockley Way SE15. The measures are being drafted by the Public Realm Projects Team, with the project manager for this scheme being Chris Mascord (Senior Engineer).
- 1.1.2 The area under consideration is located within the SE15 district of Southwark (Nunhead) in the centre of the borough. See figure 1 below.

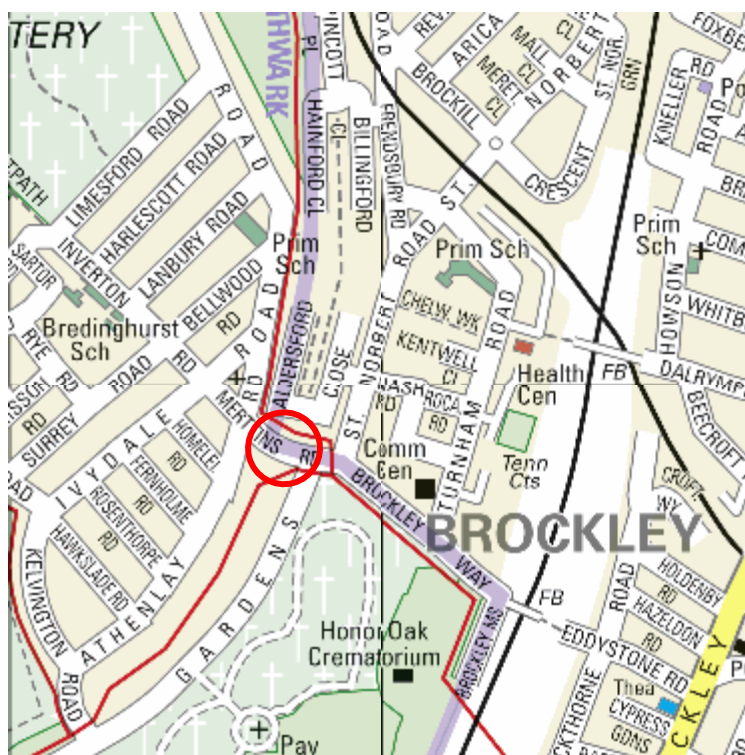


Figure 1: Location of proposed scheme

1.2 Project and Objectives

- 1.2.1 The measures proposed in this consultation are part of the Council's ongoing commitment to make Southwark's streets safer and more accessible for all. The proposed measures will assist to enhance the environment for all road users, reducing traffic speeds and improving pedestrian safety.
- 1.2.3 It is proposed that new zebra crossing is introduced on Brockley Way adjacent to Athenlay Road junction. Additional measures include:
- A footway buildout on the northern side of Brockley Way. This measure will reduce carriageway width and crossing distance for pedestrians as well as acting as a traffic calming feature.

- A street tree is proposed to be planted on the footway buildout to improve the visual quality of the streetscape.
- There are also parking restrictions associated with the zebra crossing to ensure that there is adequate visibility on approach to the crossing location. These have been kept to a minimum, but are essential to ensure the safety of pedestrians using the crossing facility.

See Appendix A for drawing of proposed scheme

1.3 Consultation Procedure

- 1.3.1 The views of the local community and those of statutory consultees have been sought, prior to the development of measures to a detailed design stage. Active community participation was encouraged through the use of a consultation document and questionnaire (see Appendix B – Consultation Documents).
- 1.3.2 The consultation document included a covering letter describing the proposals and a request for comments (including information to assist in translation and large print versions of the consultation document), preliminary design drawings (A3 size) and a questionnaire/comment form that could be sent to the Public Realm Projects Group with a pre-paid address reply.
- 1.3.3 The consultation document was delivered to a geographical area centred on the junctions of Brockley Way and Athenlay Road using strategic roads and pedestrian desire lines as defined cut off points (See Appendix C – Location Plan and Extents of Consultation).
- 1.3.4 The distribution area was large enough to gain views from the wider community that may be considered to be affected by the proposed measures. A mailing list was established for the area by way of the Council's GIS database. In addition, the consultation documents and plans were supplied to the Council's established list of statutory consultees including London Buses, cycle groups and the Metropolitan Police. Please see Appendix D of list of addresses within the distribution area.
- 1.3.5 The consultation documents were delivered by Royal Mail to 94 addresses detailed within the distribution list. The documents were delivered on the 2nd October 2012, with a return deadline of the 26th October 2012, allowing 4 weeks for the consultation period. However, consultation responses were considered for one further week after the prescribed deadline on the consultation document.

2.0 Consultation Responses

2.1 Response Rate and Distribution

- 2.1.1 A total of 33 responses were received during the consultation period, equating to a 35% response rate.
- 2.1.2 A response was received from Lewisham Council indicating that they noted the proposal and were happy with the design.
- 2.1.3 No questionnaires were received from Statutory Consultees.

2.2 Questionnaire Analysis

2.2.1 The questionnaire element of the consultation document contained the following key questions and associated tick box options:

Q1. Are you a resident or business?

Q2. Do you support the proposals?

2.2.2 The following is a summary of replies received:

Question 1 - Are you a resident or business?

	Resident	Business
Replies	32	1
Total	97%	3%

Table 1: Returned questionnaire results for question 1

2.2.3 Table 1 indicates that the majority of responses received throughout the consultation period were from local residents, with only one business formally replying.

Question 2 – Do you support the proposals?

	Support	Opposed	No Opinion
Replies	28	4	1
Total	85%	12%	3%

Table 2: Returned questionnaire results for question 2

Brockley Way Zebra Crossing Consultation Response

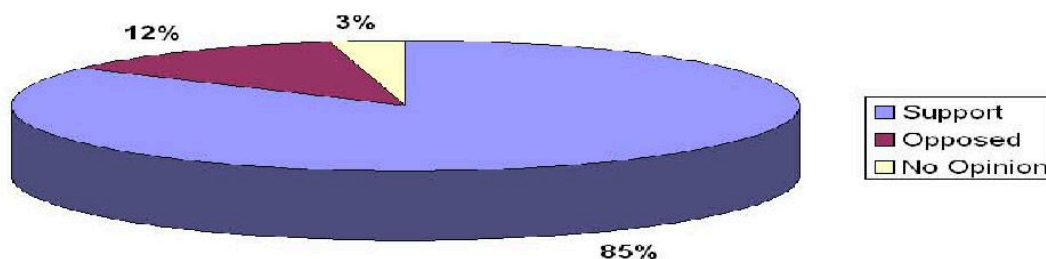


Figure 2: Graphical representation of consultation data for question 2

2.2.4 Table 2 and figure 2 indicate a majority of support for question 2, with 85% welcoming the proposed zebra crossing in Brockley Way.

2.3 Additional Comments

2.3.1 The questionnaire element of the consultation document invited consultees to attach any additional comments they may have on the proposals when returning the reply-paid questionnaire.

2.3.2 The majority of respondents (85%) indicated full support for the proposed road safety measures, indicating that the measures were very welcome to enhance road safety and pedestrian safety, as well as effectively reducing traffic speeds in the area.

2.3.3 Many respondents indicated that a zebra crossing at the proposed location is a necessity and will assist school children and the elderly crossing this dangerous section of the road.

2.3.4 A request was made for a zebra crossing at Cheltenham Road / Stuart Road junction. *

* In response, there is no current funding to look at the feasibility of this proposal. The request has been noted for future reference.

2.3.5 A number of requests were made for traffic calming measures in Athenlay Road (humps, chicanes, signage)*

* In response, there are currently no proposals for additional traffic calming in the area and no budget to investigate the feasibility of these requests. Potential funding may become available from future CGS applications.

2.3.9 Analysis of the additional comments from respondents that objected to the scheme highlighted the following concerns:

A number of objections were received relating that the loss of parking.*

* In response, the restrictions associated with the zebra crossing to ensure that there is adequate visibility on approach to the crossing location. These have been kept to a minimum, but are essential to ensure the safety of pedestrians using the crossing facility. Without the zig zag controlling lines, the crossing would not be safe to use and would not pass a highway safety audit.

It must be noted that the positioning of the crossing also minimises the loss of kerbside parking in Brockley Way due to its close proximity to Athenlay Road.

The council's road user hierarchy also prioritises pedestrians and more vulnerable road users over parking and car usage.

An objection was received detailing concern that there were inadequate sightlines to the proposed crossing facility.

* In response, there is adequate forward stopping sightline for both approaches to the zebra crossing. The road is has a speed limit of 20mph with 85th percentile speeds of 22pmph.

The manual for streets indicates that a 45m stopping sightline distance is required for a road with a 30mph limit. Therefore a road with 22mph (85% percentile) speed requires approximately 33m clear forward visibility to a controlled pedestrian crossing facility.

A 33m approach visibility is maintained on the northwest approach (down the hill) even if there are vehicles parked adjacent to the kerbside on the south-eastern side of Brockley Way.

A 45m forward visibility is maintained on the southwest approach.

A number of objections indicated they would prefer the crossing in another location. *

* In response, the proposed location of the zebra crossing has been chosen in response to local residents' comments and suggestions. The proposed location is also on the main crossing desire line on Brockley Way.

Locating the crossing in a different location may result in road safety issues, pedestrians not using the facility (as it is located way from the desire line) and increased loss of kerbside parking.

2.3.10 22% respondents did not submit a further comment.

2.4 Levels of Consensus

2.4.1 The following majority levels of agreement have been given in relation to the questions contained within the consultation document:

- 85% of consultees support the introduction of the zebra crossing;

- 12% of consultees are opposed to the introduction of the zebra crossing; and
- 3% of consultees had no opinion regarding the proposed scheme.

2.5 Statutory Consultee Replies

2.5.1 No statutory consultees provided a reply to the consultation.

2.5.2 No objections were received from Ward Members throughout the consultation period.

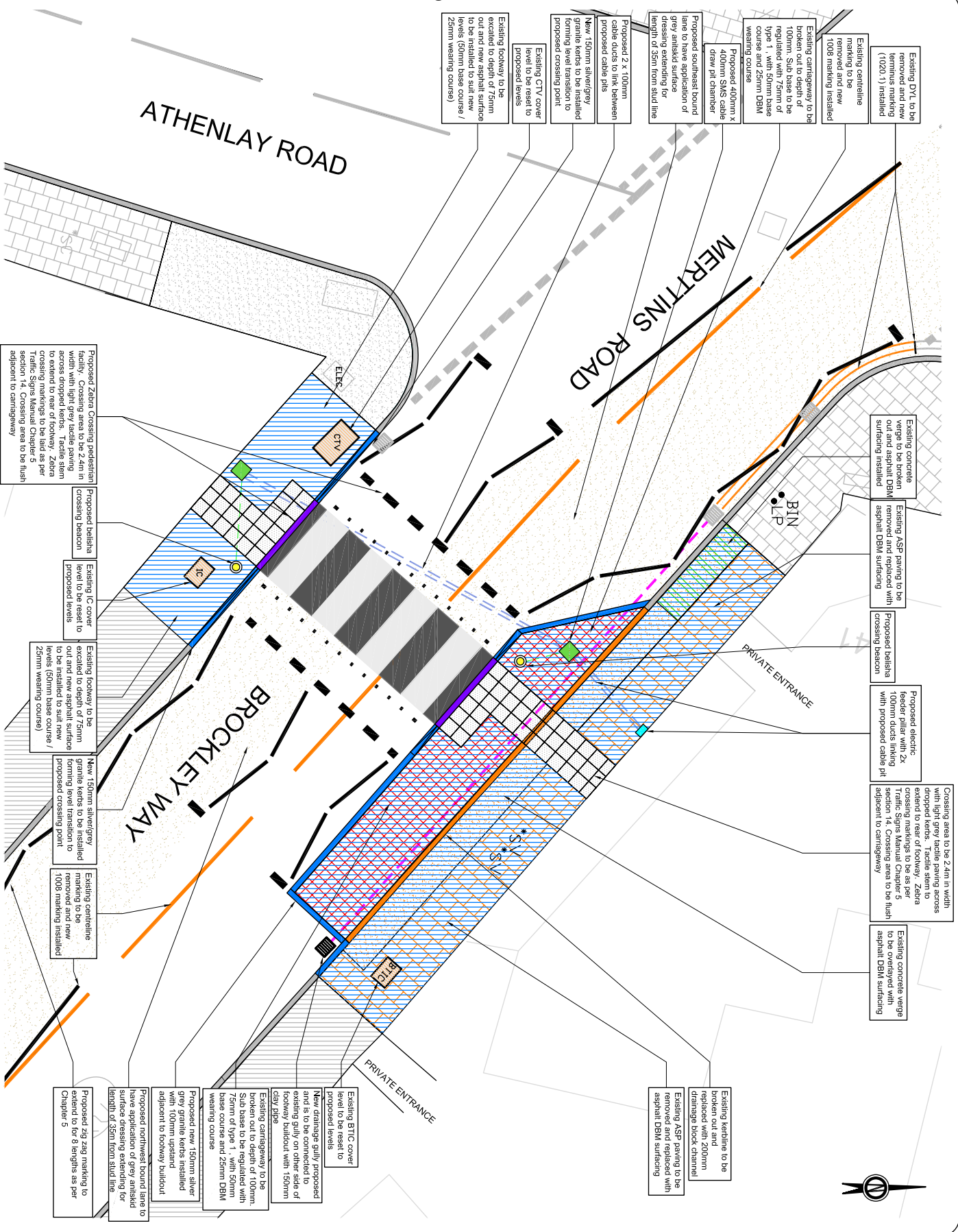
3.0 Recommendations

3.1 Due to the majority of respondents supporting the scheme and Southwark's ongoing commitment to make streets in the borough safer for all, it is recommended that the scheme is progressed to implementation.

Appendices

Appendix A:	Initial Scheme Proposals
Appendix B:	Consultation Documents
Appendix C:	Location Plan and Extents of Consultation
Appendix D:	List of Addresses within the Distribution Area

Appendix A: Initial Scheme Proposals



LEGEND / NOTES.

- Proposed new 150mm granite kerb
- Existing kerfline to be broken out / removed and new footway drainage channel installed
- Proposed flush 150mm granite kerb
- Existing kerb to remain
- Proposed transition kerb
- Existing asphalt footway
- Proposed overlay / new asphalt footway
- Existing concrete verge / footway
- Concrete verge overlaid in asphalt
- Proposed grey anti-skid carriageway / surfacing
- Concrete verge to be broken out
- Section of carriageway to be excavated
- Existing ASP paving
- ASP paving to be removed
- Proposed 400mm x 400mm grey tactile units
- Existing utility cover (level to be adjusted)
- Proposed drainage gully
- Existing drainage gully
- Proposed 150mm clay pipe
- Existing lining to be removed
- Proposed white lining
- Existing lining to remain
- Proposed basista beacon
- Proposed SMS 400mm x 400mm cable drampit
- Proposed feeder pillar
- Proposed 2 x 100mm cable duct
- Proposed 50mm cable duct

No.	Date	Revision

SmartK Council
PUBLIC REALITY PROJECTS TEAM 180 TONKIN STREET BERTH 1/2X

mouchel
a world of possibilities

Project
BROCKLEY WAY
ZEBRA CROSSING

Title
GENERAL ARRANGEMENT

Contract No.	
Scale	1:50 @ A3
Drawing No.	CM/CS-002
Date	AUGUST 2012

Appendix C: Location Plan and Extents of Consultation

We want your views

It is important for all consultees to respond to the consultation. We would be grateful if you could take the time to review the proposals outlined in this document and provide a response using the pre-paid envelope and questionnaire provided by **Friday 26th October 2012**

Your views are essential for us to understand your requirements for the proposal and form a fundamental part of the scheme development process, whether you use public transport, cycle, walk or drive a private vehicle.

Brockley Way Proposed Zebra Crossing

What happens next?

As you will appreciate Southwark Council receives many comments from consultations and therefore are unable to respond personally to specific issues raised. However all comments and suggestions will be taken into consideration before a decision is made.

The responses to the questionnaire will be analysed and taken into account in the final design of the proposed works.

Should you require any further information regarding the proposed scheme please do not hesitate to contact Chris Mascord on 020 7525 5385. Alternatively you can email to: chris.mascord@southwark.gov.uk.

If appropriate, implementation should take place in Spring 2013.

To arrange a translation of this leaflet and the other consultation documents, or for other assistance, please take it to:

One Stop Shop – 122 Peckham Hill Street, London SE15, or
One Stop Shop – 151 Walworth Road, London SE17, or
One Stop Shop – 17 Spa Road, London SE16, or
Southwark Town Hall – Peckham Road, London SE5.

التريب الترجمة هذه الكراسة هذا رجاء الى أحد العنوان التاليين:
Para obtener una traducción de este folleto, llévelo a:
Bu broşurün tercüme edilmesini düzenlemek için lütfen onu aşağıdaki yerlerden birine götürün:
Đề có bản dịch tiếng Việt, hãy mang tờ rơi này đến cửa hàng:
Pour une traduction de ce dépliant, présentez-le à l'un des guichets uniques suivants :
এই পলারপত্রিকাটির (সিফল্ডেটের) একটি অনুবাদের আয়োজন করতে হলে দয়া করে এটি এখানে নিয়ে যান:
為獲取此單張的翻譯版本，請將單張帶到以下一站式辦事處：

Have your say

Southwark Council is holding a consultation to receive residents and key stakeholders comments regarding the proposal to introduce a pedestrian zebra crossing in Brockley Way.

Background

A petition was submitted to the Nunhead and Peckham Community Council signed by local residents and stakeholders requesting the provision of safer pedestrian facilities on Merttins Road and Brockley Way. Currently there are no formal pedestrian crossing facilities and as a result, the Community Council allocated funding to progress the design of a zebra crossing to address local concern.

What are the proposed changes?

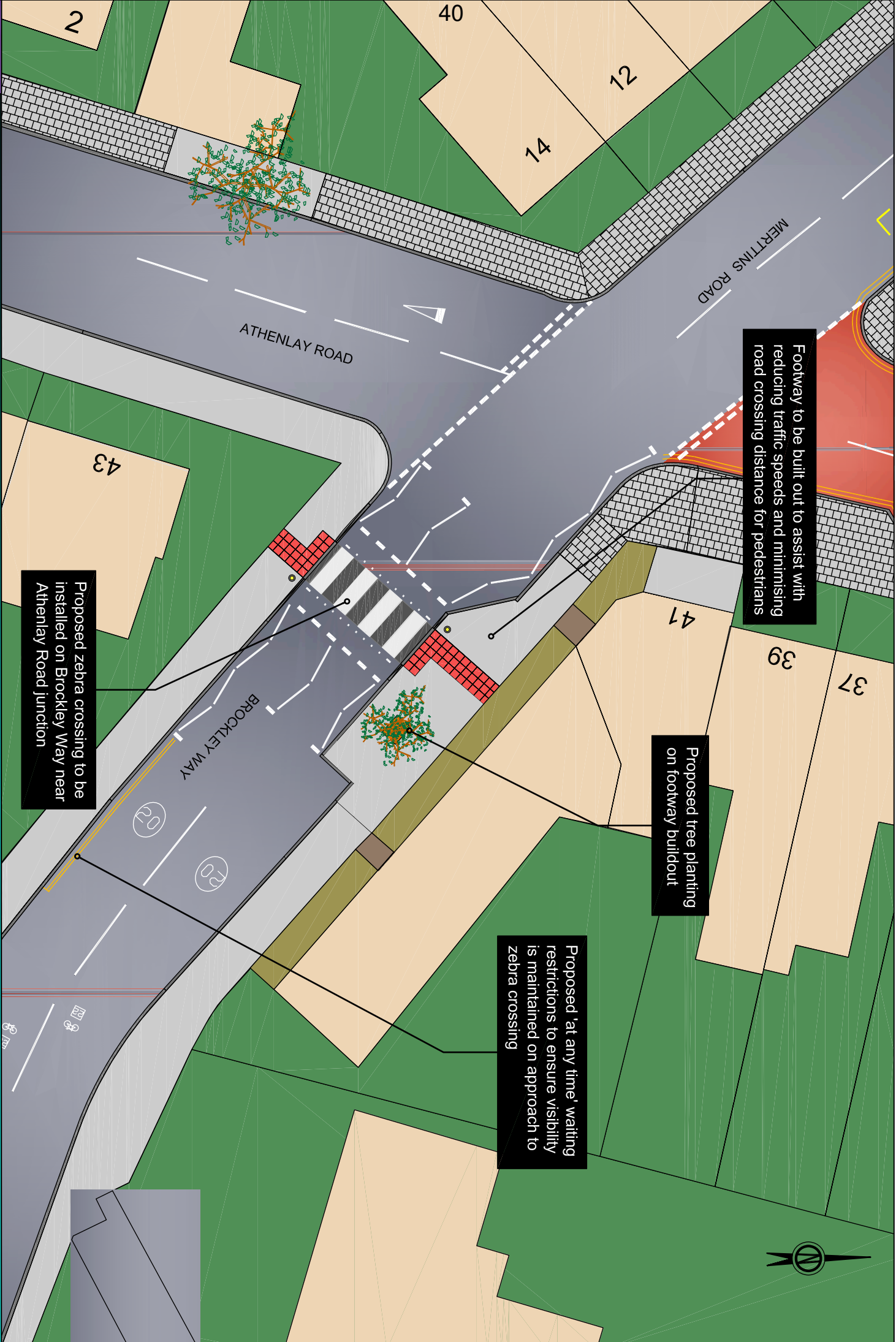
A new formal pedestrian zebra crossing is proposed to be installed on Brockley Way near Athenlay Road junction.

Measures include a footway buildout on the northern side of Brockley Way. This measure will reduce carriageway width and crossing distance for pedestrians as well as acting as a traffic calming feature.

A street tree is proposed to be planted on the footway buildout to improve the visual quality of the streetscape.

There are also parking restrictions associated with the zebra crossing to ensure that there is adequate visibility on approach to the crossing location. These have been kept to a minimum, but are essential to ensure the safety of pedestrians using the crossing facility.

BROCKLEY WAY PROPOSED ZEBRA CROSSING



Footway to be built out to assist with reducing traffic speeds and minimising road crossing distance for pedestrians

Proposed tree planting on footway buildout

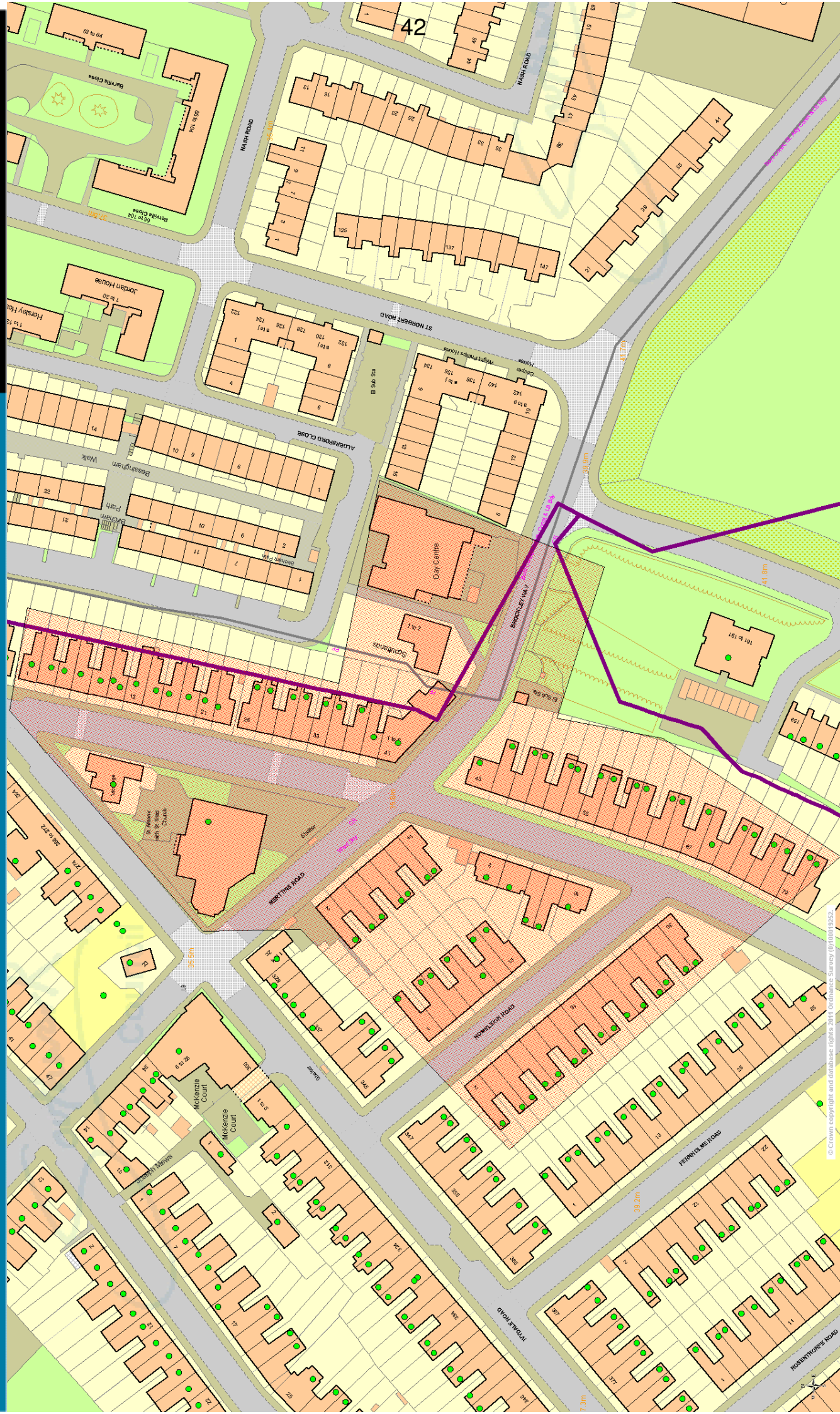
Proposed 'at any time' waiting restrictions to ensure visibility is maintained on approach to zebra crossing

Proposed zebra crossing to be installed on Brockley Way near Athenlay Road junction

Appendix B: Consultation Documents

Brockley Way Zebra Crossing Consultation Area

Date 20/9/2012



© Crown copyright and database rights 2011 Ordnance Survey 0100019252.

Appendix D: List of Addresses within Distribution Area

SUB_BUILDING	BUILDING	STREET_NUMBER	STREET	POSTCODE
		6	MERTTINS ROAD	SE15 3EB
		2	MERTTINS ROAD	SE15 3EB
		10	MERTTINS ROAD	SE15 3EB
		8	MERTTINS ROAD	SE15 3EB
		4	MERTTINS ROAD	SE15 3EB
		14	MERTTINS ROAD	SE15 3EB
		12	MERTTINS ROAD	SE15 3EB
			HOMELEIGH	
FIRST FLOOR FLAT		28	ROAD	SE15 3EE
			HOMELEIGH	
GROUND FLOOR FLAT		28	ROAD	SE15 3EE
			HOMELEIGH	
		11	ROAD	SE15 3EE
			HOMELEIGH	
		20	ROAD	SE15 3EE
			HOMELEIGH	
		18	ROAD	SE15 3EE
			HOMELEIGH	
		13	ROAD	SE15 3EE
			HOMELEIGH	
		7	ROAD	SE15 3EE
			HOMELEIGH	
		4	ROAD	SE15 3EE
			HOMELEIGH	
		24	ROAD	SE15 3EE
			HOMELEIGH	
		9	ROAD	SE15 3EE
			HOMELEIGH	
		3	ROAD	SE15 3EE
			HOMELEIGH	
		26	ROAD	SE15 3EE
			HOMELEIGH	
		22	ROAD	SE15 3EE
			HOMELEIGH	
		2	ROAD	SE15 3EE
			HOMELEIGH	
		16	ROAD	SE15 3EE
			HOMELEIGH	
		14	ROAD	SE15 3EE
			HOMELEIGH	
		12	ROAD	SE15 3EE
			HOMELEIGH	
		10	ROAD	SE15 3EE
			HOMELEIGH	
		8	ROAD	SE15 3EE
			HOMELEIGH	
		6	ROAD	SE15 3EE
			HOMELEIGH	
		5	ROAD	SE15 3EE
			HOMELEIGH	
		30	ROAD	SE15 3EE
			HOMELEIGH	
		1	ROAD	SE15 3EE
PUDDLEDUCK NURSERY	ST ANTHONY WITH ST SILAS CHURCH		ATHENLAY ROAD	SE15 3EP
	ST ANTHONY WITH ST SILAS VICARAGE		ATHENLAY ROAD	SE15 3EP
	ST ANTHONY WITH ST SILAS		ATHENLAY ROAD	SE15 3EP

	CHURCH			
FIRST FLOOR FLAT		79B	ATHENLAY ROAD	SE15 3EN
			75 ATHENLAY ROAD	SE15 3EN
			10 ATHENLAY ROAD	SE15 3EN
			8 ATHENLAY ROAD	SE15 3EN
			65 ATHENLAY ROAD	SE15 3EN
			61 ATHENLAY ROAD	SE15 3EN
			57 ATHENLAY ROAD	SE15 3EN
			53 ATHENLAY ROAD	SE15 3EN
			47 ATHENLAY ROAD	SE15 3EN
			43 ATHENLAY ROAD	SE15 3EN
			77 ATHENLAY ROAD	SE15 3EN
	FIRST FLOOR FLAT			
GROUND FLOOR FLAT		79A	69 ATHENLAY ROAD	SE15 3EN
			ATHENLAY ROAD	SE15 3EN
			75 ATHENLAY ROAD	SE15 3EN
			67 ATHENLAY ROAD	SE15 3EN
			63 ATHENLAY ROAD	SE15 3EN
			6 ATHENLAY ROAD	SE15 3EN
			59 ATHENLAY ROAD	SE15 3EN
			55 ATHENLAY ROAD	SE15 3EN
			51 ATHENLAY ROAD	SE15 3EN
			49 ATHENLAY ROAD	SE15 3EN
			45 ATHENLAY ROAD	SE15 3EN
			4 ATHENLAY ROAD	SE15 3EN
			2 ATHENLAY ROAD	SE15 3EN
			81 ATHENLAY ROAD	SE15 3EN
			73 ATHENLAY ROAD	SE15 3EN
			71 ATHENLAY ROAD	SE15 3EN
	GROUND FLOOR FLAT			
FLAT 3			69 ATHENLAY ROAD	SE15 3EN
FIRST FLOOR FLAT			41 ATHENLAY ROAD	SE15 3EA
GROUND FLOOR FLAT			13 ATHENLAY ROAD	SE15 3EA
FLAT 7			13 ATHENLAY ROAD	SE15 3EA
FLAT 5			41 ATHENLAY ROAD	SE15 3EA
FLAT 2			41 ATHENLAY ROAD	SE15 3EA
		39A	ATHENLAY ROAD	SE15 3EA
			7 ATHENLAY ROAD	SE15 3EA
			37 ATHENLAY ROAD	SE15 3EA
			3 ATHENLAY ROAD	SE15 3EA
			25 ATHENLAY ROAD	SE15 3EA
			21 ATHENLAY ROAD	SE15 3EA
			15 ATHENLAY ROAD	SE15 3EA
			1 ATHENLAY ROAD	SE15 3EA
FLAT B			33 ATHENLAY ROAD	SE15 3EA
FLAT 1			11 ATHENLAY ROAD	SE15 3EA
FLAT 2			11 ATHENLAY ROAD	SE15 3EA
FLAT A			33 ATHENLAY ROAD	SE15 3EA
FLAT 4			41 ATHENLAY ROAD	SE15 3EA
FLAT 1			41 ATHENLAY ROAD	SE15 3EA
KGMC LTD			41 ATHENLAY ROAD	SE15 3EA
FLAT 8			41 ATHENLAY ROAD	SE15 3EA
FLAT 6			41 ATHENLAY ROAD	SE15 3EA
			9 ATHENLAY ROAD	SE15 3EA

	5	ATHENLAY ROAD	SE15 3EA
	35	ATHENLAY ROAD	SE15 3EA
	31	ATHENLAY ROAD	SE15 3EA
	29	ATHENLAY ROAD	SE15 3EA
	27	ATHENLAY ROAD	SE15 3EA
	23	ATHENLAY ROAD	SE15 3EA
	19	ATHENLAY ROAD	SE15 3EA
	17	ATHENLAY ROAD	SE15 3EA
39B		ATHENLAY ROAD	SE15 3EA

Item No. 15.	Classification: Open	Date: 21 November 2012	Meeting Name: Peckham and Nunhead Community Council
Report title:		East Dulwich Road Zebra Crossing	
Ward(s) or groups affected:		Nunhead and Peckham Rye	
From:		Head of Public Realm	

RECOMMENDATION

1. That the Peckham and Nunhead Community Council:
 - Comment upon the following recommendations that are due to be made to the Cabinet Member for Environment, Transport and Recycling:
 - Approve the implementation of East Dulwich Road Zebra Crossing project subject to statutory consultation.

BACKGROUND INFORMATION

2. In accordance with Part 3H paragraph 19 and 21 of the Southwark Constitution, community councils are to be consulted on the detail of strategic parking/traffic/safety schemes. In practice this is carried out following public consultation.
3. The community council is now being given opportunity to make final representations to the Cabinet Member following public consultation.
4. Full details of all results associated with the study can be found in Appendix 1 the 'consultation report'.
5. Approval for the scheme in principle was given by Cabinet on 16 October 2012.

KEY ISSUES FOR CONSIDERATION

6. Informal public consultation took place with all residents and businesses within the consultation area from 20 October 2012 until 16 November 2012.
7. Full details of the consultation strategy, results, conclusions and recommendations can be found in Appendix 1.

Recommendations to the cabinet member for Environment, Transport and Recycling

8. On the basis of the results of the public consultation the Cabinet Member is recommended to approve the East Dulwich Road Zebra Crossing proposal to progress to implementation (subject to formal statutory consultation).

Policy implications

9. The recommendations contained within this report are consistent with the policies

of the Transport Plan 2011, particularly:

Policy 1.1 – pursue overall traffic reduction

Policy 2.3 – promote and encourage sustainable travel choices in the borough

Policy 4.2 – create places that people can enjoy

Policy 5.1 - Improve safety on our roads and to help make all modes of transport safer.

Community impact statement

10. The implementation of any transport project creates a range of community impacts. All transport schemes aim to improve the safety and security of vulnerable groups and support economic development by improving the overall transport system and access to it.

Resource implications

11. This report is for the purposes of consultation only and there are no resource implications associated with it.
12. It is, however, noted that this project is funded by the 2012/2013 LIP programme with an allocated budget of £42K.

Consultation

13. Ward members were consulted prior to commencement of the consultation.
14. Informal public consultation was carried out in October 2012 – November 2012, as detailed above.
15. This report provides an opportunity for final comment to be made by the community council prior to a non-key decision scheduled to be taken by the Cabinet Member for Environment, Transport and Recycling following this community council meeting.
16. If approved for implementation this will be subject to statutory consultation required in the making of any permanent Traffic Management Orders.

BACKGROUND DOCUMENTS

Background Papers	Held At	Contact
Transport Plan 2011	Southwark Council Environment Public Realm Network Development 160 Tooley Street London SE1 2QH Online: http://www.southwark.gov.uk/info/200107/transport_policy/1947/southwark_transport_plan_2011	Matthew Hill 020 7525 3541

APPENDICES

No.	Title
Appendix 1	East Dulwich Zebra Crossing Consultation Report

AUDIT TRAIL

Lead Officer	Des Waters, Head of Public Realm	
Report Author	Chris Mascord, Senior Engineer	
Version	Final	
Dated	12 November 2012	
Key Decision?	No	
CONSULTATION WITH OTHER OFFICERS / DIRECTORATES / CABINET MEMBER		
Officer Title	Comments Sought	Comments included
Director of Legal Services	No	No
Strategic Director of Finance and Corporate Services	No	No
Cabinet Member	Yes	No
Date final report sent to Constitutional Team	12 November 2012	

London Borough of Southwark



East Dulwich Road Zebra Crossing

Public Consultation Summary

November 2012

London Borough of Southwark

East Dulwich Road Zebra Crossing Proposal

Public Consultation Summary

Contents

List of Figures	2
List of Tables	3
1.0 Introduction	4
1.1 Background	4
1.2 Project and Objectives	4
1.3 Consultation Procedure	5
2.0 Consultation Responses	6
2.1 Response Rate and Distribution	6
2.2 Questionnaire Analysis	6
2.3 Additional Comments	7
2.4 Levels of Consensus	8
2.5 Statutory Consultee Replies	9
3.0 Recommendations	9
Appendices	10
Appendix A: Scheme Proposals	11
Appendix B: Consultation Documents	12
Appendix C: Location Plan and Extents of Consultation	13
Appendix D: List of Addresses within Distribution Area	14

List of Figures

Figure 1:	Location of proposed scheme	4
Figure 2:	Graphical representation of consultation data for question 2	7

List of Tables

Table 1:	Retuned questionnaire results for question 1	6
Table 2:	Retuned questionnaire results for question 2	6

1.0 Introduction

1.1 Background

1.1.1 This document report has been produced by the London Borough of Southwark Public Realm Projects Group, to provide a summary of the consultation exercise for a proposed zebra crossing on East Dulwich Road SE22. The measures are being drafted by the Public Realm Projects Team, with the project manager for this scheme being Chris Mascord (Senior Engineer).

1.1.2 The area under consideration is located within the SE22 district of Southwark (Peckham Rye and The Lane Wards). See figure 1 below.



Figure 1: Location of proposed scheme

1.2 Project and Objectives

1.2.1 The measures proposed in this consultation are part of the Council's ongoing commitment to make Southwark's streets safer and more accessible for all. The proposed measures will assist to enhance the environment for all road users and primarily improve pedestrian safety.

1.2.3 It is proposed that new zebra crossing is introduced on East Dulwich Road near Fenwick Road and Solway Road junction. Measures include:

- A new formal pedestrian zebra crossing is proposed to be installed on East Dulwich Road near Solway Road and Fenwick Road junction.

- Measures include a pedestrian refuge island to improve safety and assist pedestrians using the crossing.
- Cycle racks will be located to the back of the footway so that they do not cause obstruction.
- There are also parking restrictions associated with the zebra crossing to ensure that there is adequate visibility on approach to the crossing location. These have been kept to a minimum, but are essential to ensure the safety of pedestrians using the crossing facility.

See Appendix A for drawing of proposed scheme

1.3 Consultation Procedure

- 1.3.1 The views of the local community and those of statutory consultees have been sought, prior to the development of measures to a detailed design stage. Active community participation was encouraged through the use of a consultation document and questionnaire (see Appendix B – Consultation Documents).
- 1.3.2 The consultation document included a covering letter describing the proposals and a request for comments (including information to assist in translation and large print versions of the consultation document), preliminary design drawings (A3 size) and a questionnaire/comment form that could be sent to the Public Realm Projects Group with a pre-paid address reply.
- 1.3.3 The consultation document was delivered to a geographical area centred on the junctions of East Dulwich Grove and Fenwick Road using strategic roads and pedestrian desire lines as defined cut off points (See Appendix C – Location Plan and Extents of Consultation).
- 1.3.4 The distribution area was large enough to gain views from the wider community that may be considered to be affected by the proposed measures. A mailing list was established for the area by way of the Council's GIS database. In addition, the consultation documents and plans were supplied to the Council's established list of statutory consultees including London Buses, cycle groups and the Metropolitan Police. Please see Appendix D of list of addresses within the distribution area.
- 1.3.5 The consultation documents were delivered by Royal Mail to 222 addresses detailed within the distribution list. The documents were delivered on the 24th October 2012, with a return deadline of the 16th November 2012, allowing 4 weeks for the consultation period. However, consultation responses were considered for one further week after the prescribed deadline on the consultation document.

2.0 Consultation Responses

2.1 Response Rate and Distribution

2.1.1 A total of 41 responses were received during the consultation period, equating to a 19% response rate.

2.1.3 One questionnaire was received from a Statutory Consultee.

2.2 Questionnaire Analysis

2.2.1 The questionnaire element of the consultation document contained the following key questions and associated tick box options:

Q1. Are you a resident or business?

Q2. Do you support the proposals?

2.2.2 The following is a summary of replies received:

Question 1 - Are you a resident or business?

	Resident	Business
Replies	38	3
Total	93%	7%

Table 1: Returned questionnaire results for question 1

2.2.3 Table 1 indicates that the majority of responses received throughout the consultation period were from local residents, with only one business formally replying.

Question 2 – Do you support the proposals?

	Support	Opposed	No Opinion
Replies	37	4	0
Total	90%	10%	3%

Table 2: Returned questionnaire results for question 2

Figure 2: Graphical representation of consultation data for question 2



2.2.4 Table 2 and figure 2 indicate a majority of support for question 2, with 90% welcoming the proposed zebra crossing on East Dulwich Road.

2.3 Additional Comments

2.3.1 The questionnaire element of the consultation document invited consultees to attach any additional comments they may have on the proposals when returning the reply-paid questionnaire.

2.3.2 The majority of respondents (90%) indicated full support for the proposed zebra crossing, indicating that the measures were very welcome to enhance road safety and pedestrian safety at this location, as crossing East Dulwich Road is very difficult for pedestrians.

2.3.3 Many respondents indicated that a zebra crossing at the proposed location is a necessity and will address a main desire line across East Dulwich Road. They also indicated that it may slow down traffic as well.

2.3.4 A number of respondents witnessed at least 2 serious accidents as a result of the number of people crossing the road including children. They also highlighted many children and their families cross the road between the 2 major traffic lights which are situated further along the EDR. Also the crossing can help minimise accidents that happened in the past that involved children under 15 years.

2.3.5 No further requests were made for additional measures.

2.3.9 Analysis of the additional comments from respondents that objected to the scheme highlighted the following concerns:

A respondent highlighted that the there is an exiting problem with the Peckham Rye traffic lights and the zebra crossing will make the problem worse.*

* In response, the council is to shortly implement a scheme at the Peckham Rye junction to improve the timing of the signals which will enhance capacity and reduce queue lengths. The location of the zebra crossing is far enough away from the signals as to not have an adverse impact on traffic flows or through-capacity.

The council's road user hierarchy also prioritises pedestrians and more vulnerable road users over car usage and traffic flows.

An objection was received detailing that the crossing is to purely cater for Tescos and that pedestrians should walk down to the Peckham Rye junction and cross there.*

*In response, the crossing is located on a strong pedestrian desire line. Site surveys conclude that the majority of pedestrians wanting to cross East Dulwich Road near Fenwick Road do not walk down to the signals to cross the road.

The crossing is purely designed to cater for this pedestrian demand and is not being implemented to improve access to a local retailer.

An objection was received stating that there should not be a traffic island as this restricts the highway lanes. Concerned that delivery vehicles not using the forecourt of Tesco's will either restrict visibility out of Solway Road if parked in E Dulwich loading bay, or will use Solway Road.*

* In response, the traffic island proposed between the bus lane and the eastbound traffic lane is so that pedestrians can cross the bus lane and eastbound traffic lane in two movements. Placing the pedestrian on the refuge island will allow them to become clearly visible to eastbound drivers approaching the zebra crossing.

If the island was not provided, pedestrians would have to cross two traffic lanes in the same direction. The fear was that if a bus stopped to let a pedestrian cross the road, then a car in the outside lane travelling in the same direction could potentially not see the pedestrian due them being obscured by the bus (resulting in a potentially fatal collision).

The remaining lane widths after installing the islands are 3m which is ample width for traffic flows including HVG's and buses.

The visibility splays from the zebra crossing meet national standards even if there is a high sided vehicle in the loading bay east of Solway Road. The loading bay has been there for many years and no issues have been reported by local residents regarding visibility turning out of Solway Road.

2.3.10 28% respondents did not submit a further comment.

2.4 Levels of Consensus

2.4.1 The following majority levels of agreement have been given in relation to the questions contained within the consultation document:

- 90% of consultees support the introduction of the zebra crossing;
- 10% of consultees are opposed to the introduction of the zebra crossing; and
- 0% of consultees had no opinion regarding the proposed scheme.

2.5 Statutory Consultee Replies

2.5.1 Southwark Living Streets formally responded to the scheme outlining their full support for the new zebra crossing. They made an additional request for the crossing to be raised. However, due to limited funding, implementing a raised carriageway table is not possible at this stage. However, the crossing is designed so that one could be implemented in the future if required.

2.5.2 No objections were received from Ward Members throughout the consultation period.

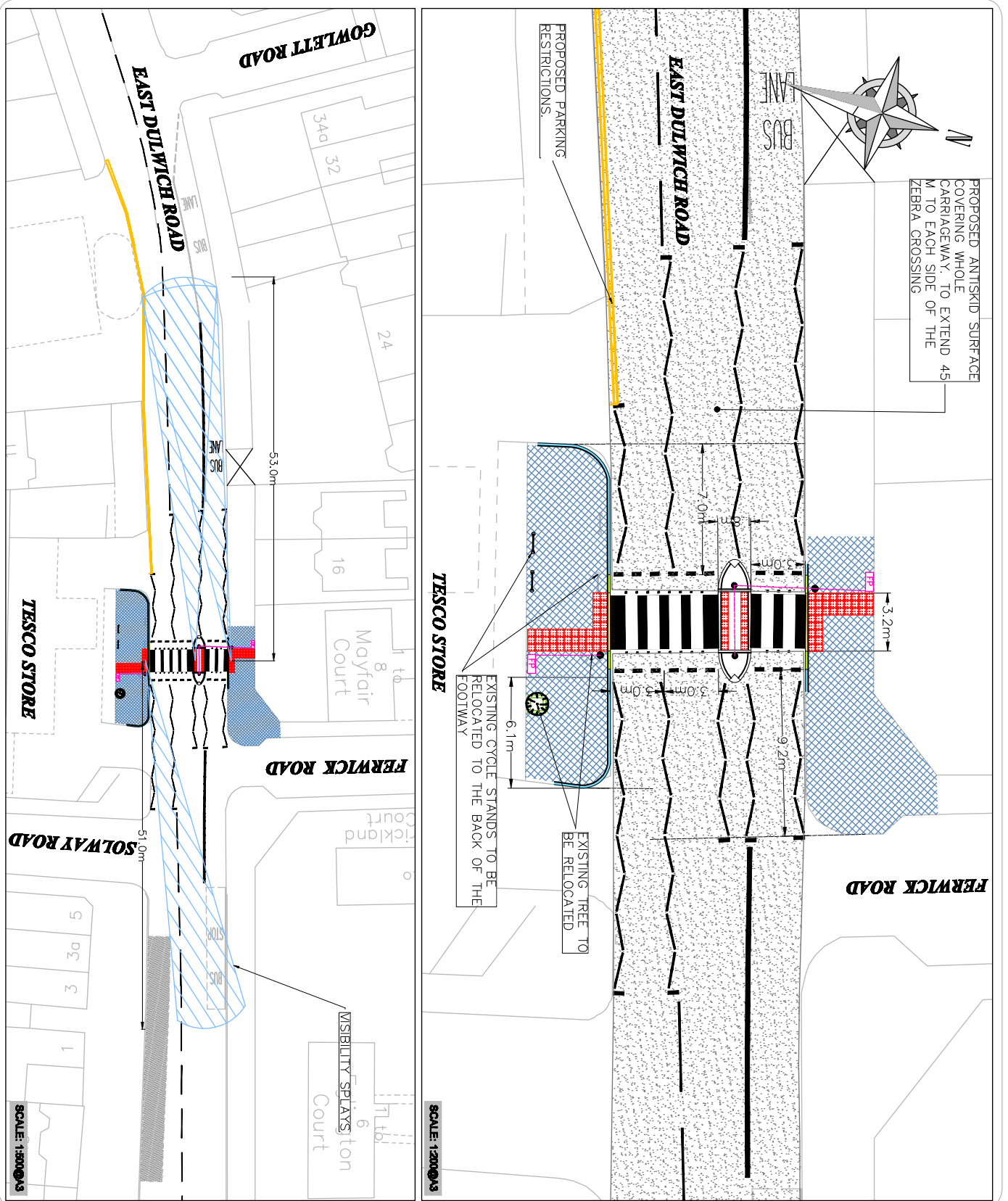
3.0 Recommendations

3.1 Due to the majority of respondents supporting the scheme and Southwark's ongoing commitment to make streets in the borough safer for all, it is recommended that the East Dulwich Road zebra crossing scheme is progressed to implementation.

Appendices

Appendix A:	Initial Scheme Proposals
Appendix B:	Consultation Documents
Appendix C:	Location Plan and Extents of Consultation
Appendix D:	List of Addresses within the Distribution Area

Appendix A: Initial Scheme Proposals



LEGEND / NOTES.

- RED TACTILE PAVING UNIT (Kerabond)
- GRANITE KERB (Subsiding) LAD WITH 100-40mm LITRATED (Subsiding) LAD WITH SLOPE 1:10
- TAPER GRANITE KERB (Subsiding) LAD WITH SLOPE 1:10
- GRANITE KERB (Subsiding) LAD WITH SLOPE 1:10
- NEW TARMAC FOOTWAY
- PROPOSED ANTISKID
- NEW GULLY TO BE CONNECTED TO EXISTING GULLY
- NEW BE BSH BEACON
- NEW FEEDER PILLAR
- NEW PARKING RESTRICTIONS ROAD MARKINGS
- NEW ROAD MARKINGS
- NEW GULLY CONNECTION
- EXISTING ROAD MARKINGS
- EXISTING KERB LINE

NOTES.

1. ALL DIMENSIONS ARE IN METERS UNLESS OTHERWISE STATE.
2. DO NOT SCALE FROM THIS DRAWING. USE ONLY WRITTEN DIMENSIONS.
3. ALL POSSESSORS TO BE REPORTED TO THE ENGINEER.
4. THE POSITION OF ANY UNDERGROUND UTILITIES SHALL BE VERIFIED AND ESTABLISHED ON SITE BY THE CONTRACTOR PRIOR TO CONSTRUCTION.
5. ALL UTILITY SERVICES WITHIN THE AREA OF WORKS TO BE IDENTIFIED AND MARKED BY THE CONTRACTOR.
6. RISK OF UNDERMINING LAMP COLUMN FOUNDATIONS. TAKE EXTRA CARE WHEN DIGGING FOOTWAY EXPANSIONS. THE PROPOSED TABLES TO BE 100mm IN HEIGHT ABOVE EXISTING ROAD FORMATION, UNLESS OTHERWISE SPECIFIED.

No.	Date	Revision
1	14/12/12	INITIAL ISSUE
2	08/09/12	DESIGN MANUAL CHANGES



PECKHAM RYE SOUTH

EAST DULWICH ROAD PEDESTRIAN CROSSING PROPOSALS / FERWICK ROAD

Contract No.	
Scale	AS SHOWN
Drawing No.	10512/PR/002
Date	10/12

Appendix C: Location Plan and Extents of Consultation

East Dulwich Road – Proposed Zebra Crossing

We want your views

It is important for all consultees to respond to the consultation. We would be grateful if you could take the time to review the proposals outlined in this document and provide a response using the pre-paid envelope and questionnaire provided by **Friday 16th November 2012**

Your views are essential for us to understand your requirements for the proposal and form a fundamental part of the scheme development process, whether you use public transport, cycle, walk or drive a private vehicle.

What happens next?

As you will appreciate Southwark Council receives many comments from consultations and therefore are unable to respond personally to specific issues raised. However all comments and suggestions will be taken into consideration before a decision is made.

The responses to the questionnaire will be analysed and taken into account in the final design of the proposed works.

Should you require any further information regarding the proposed scheme please do not hesitate to contact David Vazquez-Rossainz. Alternatively you can email to:

david.vazquez-rossainz@southwark.gov.uk

If appropriate, implementation should take place in Spring 2013.

To arrange a translation of this leaflet and the other consultation documents, or for other assistance, please take it to:

**One Stop Shop – 122 Peckham Hill Street, London SE15, or
One Stop Shop – 151 Walworth Road, London SE17, or
One Stop Shop – 17 Spa Road, London SE16, or
Southwark Town Hall – Peckham Road, London SE5.**

التترتيب ترجمة هذه الكراسة خذها رجاء الى أحد العنوانين التاليين:

Para obtener una traducción de este folleto. llévelo a:

Bu broşürün tercüme edilmesini düzenlemek için lütfen onu aşağıdaki yerlerden birine götürün:

Đề có bản dịch tiếng Việt, hãy mang tờ rơi này đến cửa hàng:

Pour une traduction de ce dépliant, présentez-le à l'un des guichets uniques suivants :

এই পত্রিকাটির (সিঙ্গেটের) একটি অনুলিপি আনোজন করতে হলে দয়া করে এটি এখানে নিয়ে যান:

為獲取此單張的翻譯版本，請將單張帶到以下一站式辦事處：

Have your say

Southwark Council is holding a consultation to receive residents and key stakeholders comments regarding the proposal to introduce a pedestrian zebra crossing on East Dulwich Road near Fenwick Road and Solway Road junction.

Background

The council has received numerous requests by local residents and interest groups asking for better pedestrian crossing facilities on East Dulwich Road, particularly near Fenwick Road junction. The proposed position of the pedestrian crossing has been chosen to cater for the strong demand in pedestrian movement across East Dulwich Road at this location.

What are the proposed changes?

A new formal pedestrian zebra crossing is proposed to be installed on East Dulwich Road near Solway Road and Fenwick Road junction.

Measures include a pedestrian refuge island to improve safety and assist pedestrians using the crossing.

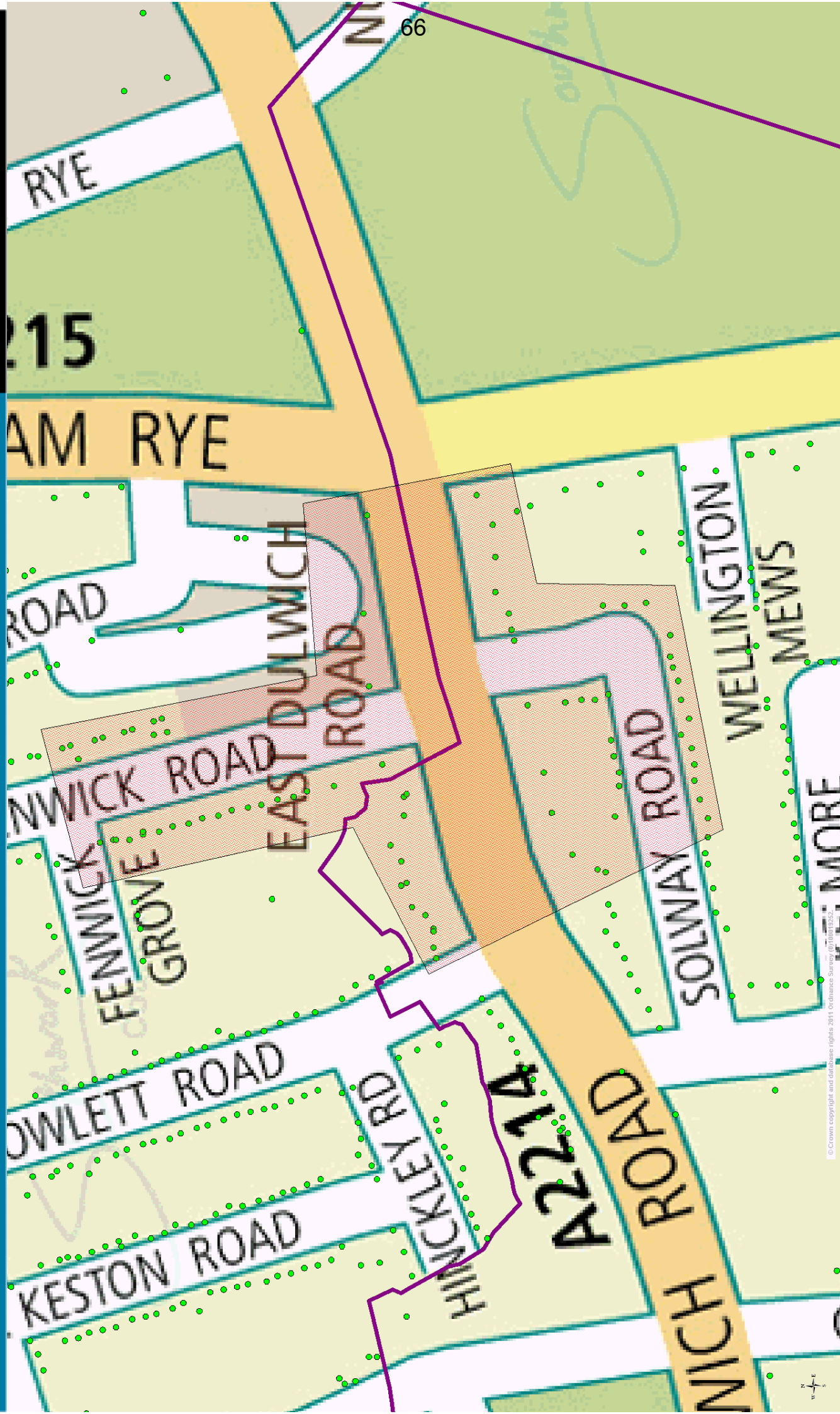
Cycle racks will be located to the back of the footway so that they do not cause obstruction.

There are also parking restrictions associated with the zebra crossing to ensure that there is adequate visibility on approach to the crossing location. These have been kept to a minimum, but are essential to ensure the safety of pedestrians using the crossing facility.

Appendix B: Consultation Documents

East Dulwich Road Pedestrian Crossing - Consultation Area

Date 27/9/2012



© Crown copyright and database rights 2011 Ordnance Survey (0710018252)

This map is based on Ordnance Survey material with the permission of Ordnance Survey on behalf of the Controller of Her Majesty's Stationary Office © Crown copyright. Unauthorised reproduction infringes Crown copyright and may lead to production or civil proceedings. (0710018252) 2009

Scale 1/1247

Appendix D: List of Addresses within Distribution Area

ORGANISATION	SUB_BUILDING	BUILDING	STREET_NUMBER	STREET	POSTCODE
	FLAT 6		136	PECKHAM RYE	SE22 9QH
	FLAT 1		136	PECKHAM RYE	SE22 9QH
	FLAT 5		136	PECKHAM RYE	SE22 9QH
	FLAT 4		136	PECKHAM RYE	SE22 9QH
BURNET WARE & GRAVES			134	PECKHAM RYE	SE22 9QH
	FLAT 3		136	PECKHAM RYE	SE22 9QH
	FLAT 2		136	PECKHAM RYE	SE22 9QH
			138	PECKHAM RYE	SE22 9QH
	SECOND FLOOR FLAT		24	SOLWAY ROAD	SE22 9BG
	GROUND FLOOR FLAT		24	SOLWAY ROAD	SE22 9BG
			12B	SOLWAY ROAD	SE22 9BG
			13A	SOLWAY ROAD	SE22 9BG
	FLAT 4		29	SOLWAY ROAD	SE22 9BG
	FLAT 2		29	SOLWAY ROAD	SE22 9BG
	FLAT 6	STRATA COURT	28	SOLWAY ROAD	SE22 9BG
	FLAT 4	STRATA COURT	28	SOLWAY ROAD	SE22 9BG
	FLAT 3	STRATA COURT	28	SOLWAY ROAD	SE22 9BG
	FLAT 1	STRATA COURT	28	SOLWAY ROAD	SE22 9BG
			20	SOLWAY ROAD	SE22 9BG
			16	SOLWAY ROAD	SE22 9BG
			11	SOLWAY ROAD	SE22 9BG
			10	SOLWAY ROAD	SE22 9BG
			8B	SOLWAY ROAD	SE22 9BG
			19C	SOLWAY ROAD	SE22 9BG
			19A	SOLWAY ROAD	SE22 9BG
			17A	SOLWAY ROAD	SE22 9BG
			22	SOLWAY ROAD	SE22 9BG
			25	SOLWAY ROAD	SE22 9BG
			13C	SOLWAY ROAD	SE22 9BG

		13B	SOLWAY ROAD	SE22 9BG
FLAT A			7 SOLWAY ROAD	SE22 9BG
		12A	SOLWAY ROAD	SE22 9BG
FIRST FLOOR FLAT			24 SOLWAY ROAD	SE22 9BG
FLAT B			7 SOLWAY ROAD	SE22 9BG
FLAT 5			29 SOLWAY ROAD	SE22 9BG
FLAT 3			29 SOLWAY ROAD	SE22 9BG
FLAT 1			29 SOLWAY ROAD	SE22 9BG
FLAT 5	STRATA COURT		28 SOLWAY ROAD	SE22 9BG
FLAT 2	STRATA COURT		28 SOLWAY ROAD	SE22 9BG
			26 SOLWAY ROAD	SE22 9BG
			23 SOLWAY ROAD	SE22 9BG
			21 SOLWAY ROAD	SE22 9BG
			15 SOLWAY ROAD	SE22 9BG
			14 SOLWAY ROAD	SE22 9BG
		8A	SOLWAY ROAD	SE22 9BG
		23A	SOLWAY ROAD	SE22 9BG
		19D	SOLWAY ROAD	SE22 9BG
		19B	SOLWAY ROAD	SE22 9BG
		18B	SOLWAY ROAD	SE22 9BG
		17B	SOLWAY ROAD	SE22 9BG
			9 SOLWAY ROAD	SE22 9BG
			27 SOLWAY ROAD	SE22 9BG
		18A	SOLWAY ROAD	SE22 9BG
FIRST FLOOR AND SECOND FLOOR FLAT			1 EAST DULWICH ROAD	SE22 9BE
FLAT 3			11 EAST DULWICH ROAD	SE22 9BD
FLAT 2			11 EAST DULWICH ROAD	SE22 9BD
FLAT 1			11 EAST DULWICH ROAD	SE22 9BD

		EAST DULWICH SERVICE STATION	5A		EAST DULWICH ROAD	SE22 9BD
			9E		EAST DULWICH ROAD	SE22 9BD
			9B		EAST DULWICH ROAD	SE22 9BD
	FLAT 4			11	EAST DULWICH ROAD	SE22 9BD
			9F		EAST DULWICH ROAD	SE22 9BD
			9D		EAST DULWICH ROAD	SE22 9BD
			9A		EAST DULWICH ROAD	SE22 9BD
			9C		EAST DULWICH ROAD	SE22 9BD
MURCO PETROLEUM LTD			13 - 17		EAST DULWICH ROAD	SE22 9BD
TESCO S G SMITH (MOTORS) LTD	LEFT HAND FACING	REAR OF	5A - 9		EAST DULWICH ROAD	SE22 9BD
	FLAT 1	BEECH COURT	1B	1	EAST DULWICH ROAD	SE22 9BA
	FLAT 2	BEECH COURT	1B		EAST DULWICH ROAD	SE22 9BA
	FLAT 4	HAZEL COURT	1A		EAST DULWICH ROAD	SE22 9BA
	FLAT 2			5	EAST DULWICH ROAD	SE22 9BA
	FLAT 2			3	EAST DULWICH ROAD	SE22 9BA
	FLAT 1			3	EAST DULWICH ROAD	SE22 9BA
MOTOR ECONOMY				5	EAST DULWICH ROAD	SE22 9BA
STAYCOOL	REAR OF			1	EAST DULWICH ROAD	SE22 9BA
	FLAT 1	HAZEL COURT	1A		EAST DULWICH ROAD	SE22 9BA

	FLAT 3	BEECH COURT	1B	EAST DULWICH ROAD	SE22 9BA
	FLAT 3	HAZEL COURT	1A	EAST DULWICH ROAD	SE22 9BA
	FLAT 2	HAZEL COURT	1A	EAST DULWICH ROAD	SE22 9BA
	FLAT 4	BEECH COURT	1B	EAST DULWICH ROAD	SE22 9BA
	FLAT 1			5 EAST DULWICH ROAD	SE22 9BA
ROSE RATCLIFFE	RIGHT HAND FACING	REAR OF		1 EAST DULWICH ROAD	SE22 9BA
EAST DULWICH CAFE				3 EAST DULWICH ROAD	SE22 9BA
				1 EAST DULWICH ROAD	SE22 9BA
STARS HAIR & BEAUTY SALON			3A	EAST DULWICH ROAD	SE22 9BA
	SECOND FLOOR FLAT			18 EAST DULWICH ROAD	SE22 9AX
			24D	EAST DULWICH ROAD	SE22 9AX
	BASEMENT AND GROUND FLOOR FLAT			16 EAST DULWICH ROAD	SE22 9AX
	BASEMENT FLAT			18 EAST DULWICH ROAD	SE22 9AX
			24C	EAST DULWICH ROAD	SE22 9AX
	FIRST FLOOR FLAT			20 EAST DULWICH ROAD	SE22 9AX
	GROUND FLOOR FLAT			18 EAST DULWICH ROAD	SE22 9AX
	BASEMENT FLAT			20 EAST DULWICH ROAD	SE22 9AX
	BASEMENT FLAT			22 EAST DULWICH ROAD	SE22 9AX
	FIRST FLOOR FLAT		34A	EAST DULWICH ROAD	SE22 9AX
	GROUND FLOOR FLAT		34A	EAST DULWICH ROAD	SE22 9AX

FIRST FLOOR AND SECOND FLOOR FLAT		16	EAST DULWICH ROAD	SE22 9AX
FLAT 7		26	EAST DULWICH ROAD	SE22 9AX
FLAT 5		26	EAST DULWICH ROAD	SE22 9AX
FLAT 3		26	EAST DULWICH ROAD	SE22 9AX
FLAT 1		30	EAST DULWICH ROAD	SE22 9AX
	32A		EAST DULWICH ROAD	SE22 9AX
		28	EAST DULWICH ROAD	SE22 9AX
	24A		EAST DULWICH ROAD	SE22 9AX
	30B		EAST DULWICH ROAD	SE22 9AX
SECOND FLOOR FLAT		22	EAST DULWICH ROAD	SE22 9AX
SECOND FLOOR FLAT		20	EAST DULWICH ROAD	SE22 9AX
FIRST FLOOR FLAT		18	EAST DULWICH ROAD	SE22 9AX
GROUND FLOOR FLAT		22	EAST DULWICH ROAD	SE22 9AX
GROUND FLOOR FLAT		20	EAST DULWICH ROAD	SE22 9AX
FIRST FLOOR FLAT		22	EAST DULWICH ROAD	SE22 9AX
SECOND FLOOR FLAT	34A		EAST DULWICH ROAD	SE22 9AX
FLAT 8		26	EAST DULWICH ROAD	SE22 9AX
FLAT 6		26	EAST DULWICH ROAD	SE22 9AX
FLAT 4		26	EAST DULWICH ROAD	SE22 9AX
FLAT 2		26	EAST DULWICH ROAD	SE22 9AX

FLAT 1		26	EAST DULWICH ROAD	SE22 9AX
		32B	EAST DULWICH ROAD	SE22 9AX
		26	EAST DULWICH ROAD	SE22 9AX
		24B	EAST DULWICH ROAD	SE22 9AX
FLAT 6	EGLINGTON COURT		EAST DULWICH ROAD	SE15 4HG
FLAT 4	EGLINGTON COURT		EAST DULWICH ROAD	SE15 4HG
FLAT 2	EGLINGTON COURT		EAST DULWICH ROAD	SE15 4HG
FLAT 5	EGLINGTON COURT		EAST DULWICH ROAD	SE15 4HG
FLAT 3	EGLINGTON COURT		EAST DULWICH ROAD	SE15 4HG
FLAT 1	EGLINGTON COURT		EAST DULWICH ROAD	SE15 4HG
	7 RYE APARTMENTS	10	EAST DULWICH ROAD	SE15 4EY
	1 RYE APARTMENTS	10	EAST DULWICH ROAD	SE15 4EY
	12 RYE APARTMENTS	10	EAST DULWICH ROAD	SE15 4EY
	10 RYE APARTMENTS	10	EAST DULWICH ROAD	SE15 4EY
	8 RYE APARTMENTS	10	EAST DULWICH ROAD	SE15 4EY
	4 RYE APARTMENTS	10	EAST DULWICH ROAD	SE15 4EY
	3 RYE APARTMENTS	10	EAST DULWICH ROAD	SE15 4EY
	2 RYE APARTMENTS	10	EAST DULWICH ROAD	SE15 4EY
	11 RYE APARTMENTS	10	EAST DULWICH ROAD	SE15 4EY
	9 RYE APARTMENTS	10	EAST DULWICH ROAD	SE15 4EY

	6 RYE APARTMENTS		10 EAST DULWICH ROAD	SE15 4EY
	5 RYE APARTMENTS		10 EAST DULWICH ROAD	SE15 4EY
		28A	FENWICK ROAD	SE15 4HW
FLAT 2			32 FENWICK ROAD	SE15 4HW
		30A	FENWICK ROAD	SE15 4HW
			18 FENWICK ROAD	SE15 4HW
			24 FENWICK ROAD	SE15 4HW
		28B	FENWICK ROAD	SE15 4HW
BASEMENT FLAT			32 FENWICK ROAD	SE15 4HW
FLAT 3			32 FENWICK ROAD	SE15 4HW
		20A	FENWICK ROAD	SE15 4HW
		18A	FENWICK ROAD	SE15 4HW
			20 FENWICK ROAD	SE15 4HW
			26 FENWICK ROAD	SE15 4HW
			22 FENWICK ROAD	SE15 4HW
		30B	FENWICK ROAD	SE15 4HW
		30C	FENWICK ROAD	SE15 4HW
BASEMENT AND GROUND FLOOR FLAT			15 FENWICK ROAD	SE15 4HS
FLAT 4	BURLINGTON COURT		FENWICK ROAD	SE15 4HS
FLAT 2	BURLINGTON COURT		FENWICK ROAD	SE15 4HS
		25B	FENWICK ROAD	SE15 4HS
		25A	FENWICK ROAD	SE15 4HS
FLAT 1			19 FENWICK ROAD	SE15 4HS
TOP FLAT			15 FENWICK ROAD	SE15 4HS
		9A	FENWICK ROAD	SE15 4HS
		7A	FENWICK ROAD	SE15 4HS
			29 FENWICK ROAD	SE15 4HS
		23A	FENWICK ROAD	SE15 4HS
FLAT 2			19 FENWICK ROAD	SE15 4HS

FLAT 3	BURLINGTON COURT	FENWICK ROAD	SE15 4HS
FLAT 1	BURLINGTON COURT	FENWICK ROAD	SE15 4HS
	17A	FENWICK ROAD	SE15 4HS
		17 FENWICK ROAD	SE15 4HS
	27C	FENWICK ROAD	SE15 4HS
	27B	FENWICK ROAD	SE15 4HS
		3 FENWICK ROAD	SE15 4HS
		13 FENWICK ROAD	SE15 4HS
		1 FENWICK ROAD	SE15 4HS
	5B	FENWICK ROAD	SE15 4HS
	5A	FENWICK ROAD	SE15 4HS
	7B	FENWICK ROAD	SE15 4HS
	27A	FENWICK ROAD	SE15 4HS
	11B	FENWICK ROAD	SE15 4HS
	11A	FENWICK ROAD	SE15 4HS
	9B	FENWICK ROAD	SE15 4HS
	23B	FENWICK ROAD	SE15 4HS
		21 FENWICK ROAD	SE15 4HS
FLAT 8	MAYFAIR COURT	FENWICK ROAD	SE15 4HR
FLAT 6	MAYFAIR COURT	FENWICK ROAD	SE15 4HR
FLAT 5	MAYFAIR COURT	FENWICK ROAD	SE15 4HR
FLAT 3	MAYFAIR COURT	FENWICK ROAD	SE15 4HR
FLAT 1	MAYFAIR COURT	FENWICK ROAD	SE15 4HR
FLAT 4	MAYFAIR COURT	FENWICK ROAD	SE15 4HR
FLAT 2	MAYFAIR COURT	FENWICK ROAD	SE15 4HR
FLAT 7	MAYFAIR COURT	FENWICK ROAD	SE15 4HR
FLAT 20	STRICKLAND COURT	FENWICK ROAD	SE15 4HP
FLAT 23	STRICKLAND COURT	FENWICK ROAD	SE15 4HP
FLAT 22	STRICKLAND COURT	FENWICK ROAD	SE15 4HP
FLAT 29	STRICKLAND COURT	FENWICK ROAD	SE15 4HP

FLAT 28	STRICKLAND COURT	FENWICK ROAD	SE15 4HP
FLAT 25	STRICKLAND COURT	FENWICK ROAD	SE15 4HP
FLAT 1	STRICKLAND COURT	FENWICK ROAD	SE15 4HP
FLAT 17	STRICKLAND COURT	FENWICK ROAD	SE15 4HP
FLAT 15	STRICKLAND COURT	FENWICK ROAD	SE15 4HP
FLAT 13	STRICKLAND COURT	FENWICK ROAD	SE15 4HP
FLAT 11	STRICKLAND COURT	FENWICK ROAD	SE15 4HP
FLAT 8	STRICKLAND COURT	FENWICK ROAD	SE15 4HP
FLAT 7	STRICKLAND COURT	FENWICK ROAD	SE15 4HP
FLAT 4	STRICKLAND COURT	FENWICK ROAD	SE15 4HP
FLAT 30	STRICKLAND COURT	FENWICK ROAD	SE15 4HP
FLAT 27	STRICKLAND COURT	FENWICK ROAD	SE15 4HP
FLAT 9	STRICKLAND COURT	FENWICK ROAD	SE15 4HP
FLAT 6	STRICKLAND COURT	FENWICK ROAD	SE15 4HP
FLAT 18	STRICKLAND COURT	FENWICK ROAD	SE15 4HP
FLAT 16	STRICKLAND COURT	FENWICK ROAD	SE15 4HP
FLAT 14	STRICKLAND COURT	FENWICK ROAD	SE15 4HP
FLAT 12	STRICKLAND COURT	FENWICK ROAD	SE15 4HP
FLAT 10	STRICKLAND COURT	FENWICK ROAD	SE15 4HP
FLAT 5	STRICKLAND COURT	FENWICK ROAD	SE15 4HP
FLAT 3	STRICKLAND COURT	FENWICK ROAD	SE15 4HP
FLAT 26	STRICKLAND COURT	FENWICK ROAD	SE15 4HP
FLAT 24	STRICKLAND COURT	FENWICK ROAD	SE15 4HP
FLAT 21	STRICKLAND COURT	FENWICK ROAD	SE15 4HP
FLAT 2	STRICKLAND COURT	FENWICK ROAD	SE15 4HP
FLAT 19	STRICKLAND COURT	FENWICK ROAD	SE15 4HP

Item No. 16.	Classification: Open	Date: 21 November 2012	Meeting Name: Peckham and Nunhead Community Council
Report title:		Cycle Permeability Scheme	
Ward(s) or groups affected:		Grange, Livesey, Riverside, Cathedrals, Chaucer, East Walworth, Newington, Brunswick Park, Camberwell Green, Nunhead, Peckham and East Dulwich	
From:		Head of Public Realm	

RECOMMENDATION

1. That the community council note or comment on:
 - The cycle permeability proposals as outlined in Appendix A
 - Representations received during public consultation, as summarised in Appendix C.
 - The impact of proposal on parking , as shown in Appendix B

BACKGROUND INFORMATION

2. Any representation received as part of public and statutory consultation will be presented to the Cabinet Member of Environment, Transport and Recycling for a decision on whether to proceed or drop a scheme
3. In accordance with Part 3H of the Southwark Constitution, community councils are to be consulted on the detail of strategic parking/ traffic/safety schemes. In practice this is carried out following public consultation.
4. The community council is now being given the opportunity to make final representations to the Cabinet Member as part of the public consultation process.
5. This scheme was identified as one which would help to deliver Southwark's aim of increasing walking and cycling levels in the borough, and funded by Transport for London as part of the Local Implementation programme for 2012 - 2013.
6. The particular locations of focus were identified using the Cycle Skills Network Audit (CSNA) and by Southwark Cyclists / Living Streets as areas that could be improved to allow better access for pedestrians and cyclists.
7. The overall objectives of this scheme are to encourage journeys on foot or by bike by opening up new links that avoid heavily trafficked streets.

KEY ISSUES FOR CONSIDERATION

8. **Contra flow:** Public consultation was carried out on proposals that would remove or relocate existing parking, due to road safety concerns. Appendix B shows summary of changes to parking arrangements, which affects **only 3** contra flows.

Appendix C summarise representations received due to changes to parking. The public consultation took place with residents and businesses within the scheme area from September until October 2012.

9. **Shared use footway / alleyway:** Where it is proposed that cyclists use the exiting footway / alleyway, public consultation have been undertaken with residents, schools and business in the vicinity of the proposal. Representations received is summarised in Appendix C
10. The next stage of the scheme is statutory consultation.

Recommendations to the Cabinet Member for Environment, Transport and Recycling

11. On the basis of the results of the public consultation the Cabinet Member is recommended to :
 - Note representations received during public consultation process, including that from the community council
 - .Approve proposals that should be taken forward as part of statutory consultation process

Policy implications

12. The recommendations contained within this report are consistent with the policies of the Transport Plan 2011, particularly:
 - Policy 1.1 – pursue overall traffic reduction
 - Policy 2.3 – promote and encourage sustainable travel choices in the borough
 - Policy 4.2 – create places that people can enjoy
 - Policy 5.1 - Improve safety on our roads and to help make all modes of transport safer.

Community impact statement

13. The implementation of any transport project creates a range of community impacts. All transport schemes aim to improve the safety and security of vulnerable groups and support economic development by improving the overall transport system and access to it.

Resource implications

14. This report is for the purposes of consultation only and there is no resource implications associated with it.
15. It is, however, noted that this project is funded by Transport for London.

Consultation

16. Members were consulted prior to commencement of the study.
17. Informal public consultation was carried out in October 2012, as detailed above.

18. This report provides an opportunity for final comment to be made by the community council prior to a non-key decision scheduled to be taken by the Cabinet Member for Environment, Transport and Recycling in December 2012.
19. If approved for implementation this will be subject to statutory consultation required in the making of any permanent Traffic Management Orders.

BACKGROUND DOCUMENTS

Background Papers	Held At	Contact
Transport Plan 2011	Southwark Council Environment Public Realm Network Development 160 Tooley Street London SE1 2QH Online: http://www.southwark.gov.uk/info/200107/transport_policy/1947/southwark_transport_plan_2011	Matthew Hill 020 7525 3541

APPENDICES

No.	Title
Appendix A	Scheme proposals
Appendix B	Modification to Parking arrangements
Appendix C	Summary of public consultation

AUDIT TRAIL

Lead Officer	Des Waters, Head of Public Realm	
Report Author	Matthew Hill, Public Realm Programme Manager	
Version	Final	
Dated	12 November 2012	
Key Decision?	No	
CONSULTATION WITH OTHER OFFICERS / DIRECTORATES / CABINET MEMBER		
Officer Title	Comments Sought	Comments included
Director of Legal Services	No	No
Strategic Director, Finance and Corporate Services	No	No
Cabinet Member	Yes	No
Date final report sent to Constitutional Team	12 November 2012	

Appendix A

Scheme Proposals

Contra flow Schemes	CC	Ward
Etherow Street	Dulwich	East Dulwich
Brayard's Road	Peckham and Nunhead	The Lane
Penton Place	Borough, Bankside and Walworth CC	Newington
Wild's Rents	Borough, Bankside and Walworth CC	Chaucer
Tabard Street	Borough, Bankside and Walworth CC	Chaucer
Newcomen Street	Borough, Bankside and Walworth CC	Chaucer
Hampton Street	Borough, Bankside and Walworth CC	Newington
Zenoria Street / Oxonian Street	Dulwich	East Dulwich
Spurling Road	Dulwich	East Dulwich
Chapter Road	Borough, Bankside and Walworth CC	Newington
Redcross Way 1	Borough, Bankside and Walworth CC	Cathedrals
St Giles	Camberwell	Brunswick Park
Shared use footway/alleyway/cut-through		
Banyard Rd-Drummond Rd	Bermondsey and Rotherhithe	Riverside
Old Jamaica Rd	Bermondsey and Rotherhithe	Riverside
Drummond Rd-Southwark Park Rd	Bermondsey and Rotherhithe	Riverside
Love Walk	Camberwell	Brunswick Park
Melior St	Bermondsey and Rotherhithe	Grange
Friary Rd	Peckham and Nunhead	Livsey

Contra flow Schemes	CC	Ward
Webb St	Bermondsey and Rotherhithe	Grange
Wilson Gr - Marigold St	Bermondsey and Rotherhithe	Riverside
Bevington St-Farncombe St	Bermondsey and Rotherhithe	Riverside
Melon Rd	Peckham and Nunhead	Peckham
Harders Rd - Cossall Park	Peckham and Nunhead	Nunhead
King's Grove	Peckham and Nunhead	Nunhead
Law Street	Borough, Bankside and Walworth CC	Chaucer

Modification to Parking arrangements (3 Contra flows)

Street	Location	Approx Length of parking to be removed (m)	Approx number of parking spaces	Community Council	Ward
Chapter Road	Outside no. 11	6	1	Borough, Bankside and Walworth	Newington
Hampton Street	Outside no. 20	9	2	Borough, Bankside and Walworth	Newington
Redcross Way-Marshalsea Rd to Union Road	Avery House/Pattison House	10	2	Borough, Bankside and Walworth	Cathedrals

Appendix C

Summary Consultation:

CYCLE CUT-THROUGH

Location/Scheme	Description	Support	Opposed	No Opinion	Summary comments	CC	Ward
Love Walk	Segregated Path between Ashworth Close and Love Walk		5	1	Would make the footpath more dangerous and would lose its character. There are frontages on both sides and is heavily used by vulnerable users.	Camberwell	Brunswick Park
Wilson Grove/Marigold Street	Segregated Path between Wilson Grove and Marigold Street (Cranbourn Passage)	1			It is important to ensure the appropriate access for all of the users of the footpath (prams, wheelchairs) as well as cyclists and pedestrians	Bermondsey and Rotherhithe	Riverside
Banyard Rd-Drummond Rd		-	-	-	Objection from Tenants and residents association	Bermondsey and Rotherhithe	Riverside
Drummond Rd-Southwark Park Rd		-	-	-	Objection from Tenants and residents association	Bermondsey and Rotherhithe	Riverside
Webb St	Shared Path	-	-	-	Consultation documents sent to Housing Department for distribution to relevant TRA as requested	Bermondsey and Rotherhithe	Grange
Law St	Shared Path	-	-	-	TRA consulted but no reply has been received	Borough, Bankside and Walworth	Chaucer
Bevington St-Farncombe St	Shared Path	-	-	-	The path is recorded as private land, no records of owner	Bermondsey and Rotherhithe	Riverside
Old Jamaica Rd	Segregated path between St James' St and Old Jamaica Rd	--	-	-	Pub owner has been consulted and opposes to the proposed loss of parking, no response from school and Church	Bermondsey and Rotherhithe	Riverside

CYCLE CONTRA FLOW – LOSS OF PARKING

Location/Scheme	Description	Support	Opposed	No Opinion	Summary comments	CC	Ward
Hampton Street	Contra flow between Walworth Road and Steedman Street	1	2		Parking available is low and the junction with Walworth Road is already dangerous	Borough Bankside and Walworth	Newington
Chapter Road	Contra flow between Westcott Road and Manor Place/Braganza Street		1		Waste of money, speed hump unnecessary, vehicles abuse the one way already.	Borough Bankside and Walworth	Newington
Redcross Way	Contra flow between Union Road and Marshalsea Road	3	2		Loss of parking is a big factor for opposing the scheme	Borough Bankside and Walworth	Cathedrals

This page is intentionally blank.

**PECKHAM AND NUNHEAD COMMUNITY COUNCIL AGENDA DISTRIBUTION LIST (OPEN)
MUNICIPAL YEAR 2012-13**

NOTE: Original held by Constitutional Team (Community Councils) all amendments/queries to Beverley Olamijulo Tel: 020 7525 7234

Name	No of copies	Name	No of copies
To all Members of the Community Council			
Councillor Cleo Soanes (Chair)	1	Others Shahida Nasim, Audit Commission 160 Tooley St.	1
Councillor Mark Glover (Vice- Chair)	1		
Councillor Chris Brown	1		
Councillor Sunil Chopra	1		
Councillor Fiona Colley	1		
Councillor Rowenna Davis	1		
Councillor Nick Dolezal	1		
Councillor Gavin Edwards	1		
Councillor Renata Hamvas	1		
Councillor Barrie Hargrove	1		
Councillor Richard Livingstone	1		
Councillor Catherine McDonald	1		
Councillor Victoria Mills	1		
Councillor Michael Situ	1		
Councillor Althea Smith	1		
External			
Libraries (Peckham)	1		
Local History Library	1		
Press			
Southwark News	1		
South London Press	1		
Members of Parliament			
Harriet Harman MP	1		
Tessa Jowell MP	1		
Officers			
Constitutional Officer (Community Councils) Hub 4 2 nd Floor, 160 Tooley St.	60		
		Total:	82
		Dated: 12 June 2012	